

Product datasheet for **AP54079PU-N**

STMN2 (C-term) Rabbit Polyclonal Antibody

Product data:

Product Type:	Primary Antibodies
Applications:	WB
Recommended Dilution:	ELISA: 1/1000. Western Blot: 1/100-1/500.
Reactivity:	Human
Host:	Rabbit
Isotype:	Ig
Clonality:	Polyclonal
Immunogen:	KLH conjugated synthetic peptide between 144-173 amino acids from the C-terminal region of Human STMN2
Specificity:	This antibody recognizes Human Stathmin-2 / STMN2 (C-term).
Formulation:	PBS State: Aff - Purified State: Liquid purified Ig fraction Preservative: 0.09% Sodium Azide
Concentration:	lot specific
Purification:	Affinity Chromatography on Protein A
Conjugation:	Unconjugated
Storage:	Store undiluted at 2-8°C for one month or (in aliquots) at -20°C for longer. Avoid repeated freezing and thawing.
Stability:	Shelf life: one year from despatch.
Gene Name:	stathmin 2
Database Link:	Entrez Gene 11075 Human Q93045



[View online »](#)

Background:

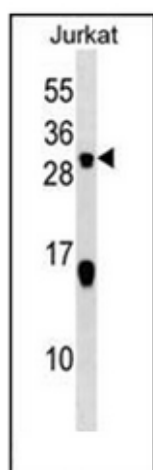
This gene encodes a member of the stathmin family of phosphoproteins. Stathmin proteins function in microtubule dynamics and signal transduction. The encoded protein plays a regulatory role in neuronal growth and is also thought to be involved in osteogenesis. Reductions in the expression of this gene have been associated with Down's syndrome and Alzheimer's disease. Alternatively spliced transcript variants have been observed for this gene. A pseudogene of this gene is located on the long arm of chromosome 6.

Synonyms:

Stathmin 2, SCG10, SCGN10

Note:

Molecular Weight: 20828 Da

Product images:

Western blot analysis of Stathmin-2 / STMN2 (C-term) in Jurkat cell line lysates (35ug/lane). This demonstrates the STMN2 antibody detected the STMN2 protein (arrow).