

Product datasheet for **AP54017PU-N**

SPG7 (Center) Rabbit Polyclonal Antibody

Product data:

Product Type:	Primary Antibodies
Applications:	IHC, WB
Recommended Dilution:	Immunohistochemistry on Paraffin Sections: 1/10-1/50. Western blot: ~1/1000. Enzyme immunoassay: 1/1000.
Reactivity:	Human
Host:	Rabbit
Isotype:	Ig
Clonality:	Polyclonal
Immunogen:	Synthetic peptide - KLH conjugated corresponding to the central region (between 115-141aa) of Human Paraplegin / SPG7
Specificity:	This antibody recognizes Human Paraplegin / SPG7. Other species not tested.
Formulation:	PBS with 0.09% (W/V) Sodium azide State: Aff - Purified State: Liquid purified Ig fraction
Concentration:	lot specific
Purification:	Purified through a Protein A column followed by peptide affinity purification
Conjugation:	Unconjugated
Storage:	Store undiluted at 2-8°C for one month or (in aliquots) at -20°C for longer. Avoid repeated freezing and thawing.
Stability:	Shelf life: one year from despatch.
Predicted Protein Size:	88235 Da (calculated)
Gene Name:	SPG7, paraplegin matrix AAA peptidase subunit
Database Link:	Entrez Gene 6687 Human Q9UQ90



[View online »](#)

Background:

The SPG7 gene encodes a nuclear-encoded mitochondrial metalloprotease protein that is a member of the AAA (ATPases associated with a variety of cellular activities) protein family. Members of this protein family share an ATPase domain and have roles in diverse cellular processes including membrane trafficking, intracellular motility, organelle biogenesis, protein folding, and proteolysis. Two transcript variants encoding distinct isoforms have been identified for this gene. Mutations associated with this gene cause autosomal recessive spastic paraplegia 7.

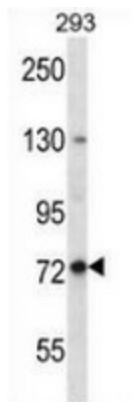
Synonyms:

Spastic paraplegia 7 protein, CAR, CMAR, PGN

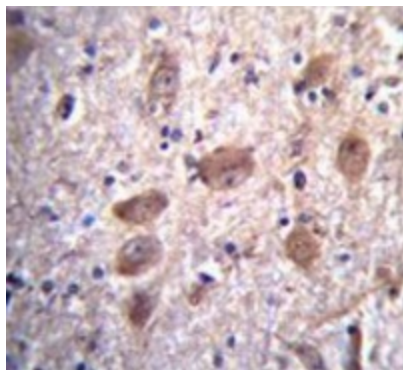
Protein Families:

Protease, Transmembrane

Product images:



Western blot analysis in 293 cell line lysates (35ug/lane) using Paraplegin / SPG7 antibody. This demonstrates the SPG7 antibody detected the SPG7 protein (arrow).



Immunohistochemistry analysis in human brain tissue (Formalin-fixed, Paraffin-embedded) using Paraplegin / SPG7 antibody., followed by peroxidase conjugation of the secondary antibody and DAB staining. This data demonstrates the use of SPG7 antibody for IHC; Clinical relevance has not been evaluated.