

Product datasheet for **AP53815PU-N**

SCN1B (N-term) Rabbit Polyclonal Antibody

Product data:

Product Type:	Primary Antibodies
Applications:	FC, IHC, WB
Recommended Dilution:	ELISA: 1/1,000. Western blotting: 1/100-1/500. Flow Cytometry: 1/10-1/50. Immunohistochemistry: 1/50-1/100.
Reactivity:	Human, Mouse
Host:	Rabbit
Isotype:	Ig
Clonality:	Polyclonal
Immunogen:	KLH conjugated synthetic peptide between 70-98 amino acids from the N-terminal region of Human SCN1B
Specificity:	Recognizes SCN1B (N-Term).
Formulation:	PBS with 0.09% (W/V) Sodium Azide as preservative State: Aff - Purified State: Liquid purified Ig fraction
Concentration:	lot specific
Purification:	Protein A column followed by peptide Affinity purification
Conjugation:	Unconjugated
Storage:	Store the antibody undiluted at 2-8°C for one month or (in aliquots) at -20°C for longer. Avoid repeated freezing and thawing.
Stability:	Shelf life: one year from despatch.
Gene Name:	sodium voltage-gated channel beta subunit 1
Database Link:	Entrez Gene 20266 Mouse Entrez Gene 6324 Human Q07699



[View online »](#)

Background:

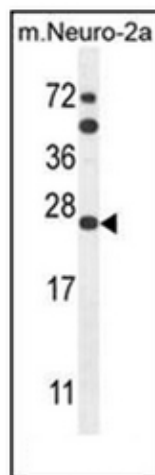
Voltage-gated sodium channels are heteromeric proteins that function in the generation and propagation of action potentials in muscle and neuronal cells. They are composed of one alpha and two beta subunits, where the alpha subunit provides channel activity and the beta-1 subunit modulates the kinetics of channel inactivation. SCN1B encodes a sodium channel beta-1 subunit. Mutations in this gene result in generalized epilepsy with febrile seizures plus, Brugada syndrome 5, and defects in cardiac conduction. Multiple transcript variants encoding different isoforms have been found for this gene.

Synonyms:

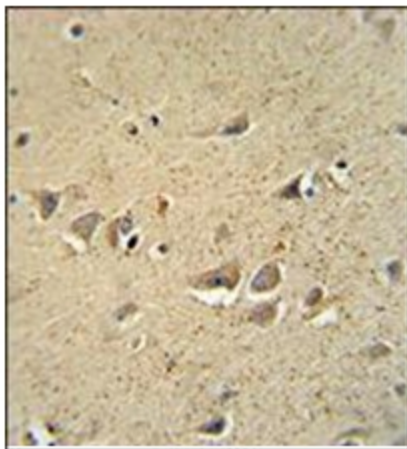
GEFSP1

Note:**Molecular Weight:** 24707 Da**Protein Families:**

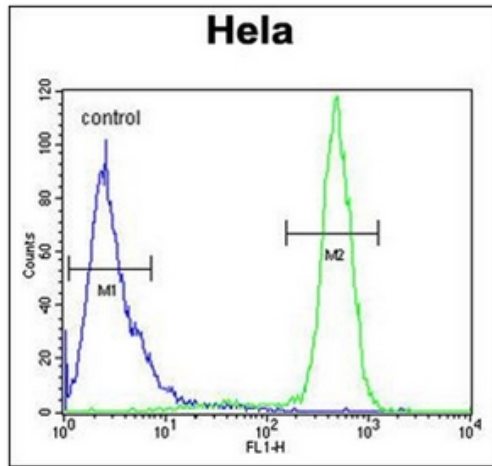
Druggable Genome, Ion Channels: Sodium, Transmembrane

Product images:

Western blot analysis of SCN1B Antibody (N-Term) in Mouse Neuro-2a cell line lysates (35ug/lane). This demonstrates the SCN1B antibody detected the SCN1B protein (arrow).



Immunohistochemistry analysis in Formalin Fixed, Paraffin Embedded Human brain tissue stained with SCN1B Antibody (N-term) followed by peroxidase conjugation of the secondary antibody and DAB staining. This data demonstrates the use of the SCN1B Antibody (N-Term) for immunohistochemistry. Clinical relevance has not been evaluated.



Flow Cytometric analysis of HeLa cells using SCN1B Antibody (N-Term) (Right histogram) compared to a negative control cell (Left histogram). FITC-conjugated goat-anti-rabbit secondary antibodies were used for the analysis.