

## Product datasheet for **AP53510PU-N**

### LOC105369264 (Center) Rabbit Polyclonal Antibody

#### Product data:

Product Type:	Primary Antibodies
Applications:	FC, IHC, WB
Recommended Dilution:	<b>Flow cytometry:</b> 1/10-1/50. <b>Immunohistochemistry on Paraffin sections:</b> 1/10-1/50. <b>Western blot:</b> 1/100-1/500. Enzyme immunoassay: 1/1000.
Reactivity:	Human
Host:	Rabbit
Isotype:	Ig
Clonality:	Polyclonal
Immunogen:	Synthetic peptide - KLH conjugated - corresponding to the central region (between 185-215aa) of human PTPN20A.
Specificity:	This antibody recognizes PTPN20.
Formulation:	PBS with 0.09% (W/V) Sodium azide State: Aff - Purified State: Liquid purified Ig fraction
Concentration:	lot specific
Purification:	Purified through a Protein A column followed by peptide affinity purification
Conjugation:	Unconjugated
Storage:	Store undiluted at 2-8°C for one month or (in aliquots) at -20°C for longer. Avoid repeated freezing and thawing.
Stability:	Shelf life: one year from despatch.
Database Link:	<a href="#">Entrez Gene 26095 Human</a> <a href="#">Entrez Gene 105369264 Human</a> <a href="#">Q4JDL3</a>



[View online »](#)

**Background:**

The product of the PTPN20A (and PTPN20B) gene belongs to the family of classical tyrosine-specific protein tyrosine phosphatases. Many protein tyrosine phosphatases have been shown to regulate fundamental cellular processes and several are mutated in human diseases. Chromosome 10q contains a segmental duplication resulting in multiple copies of the protein tyrosine phosphatase, non-receptor type 20 gene. The two nearly identical copies are designated as PTPN20A and PTPN20B. A third copy is only partially duplicated and contains a pseudogene, designated as PTPN20C. This gene encodes the more telomeric copy, PTPN20B. Multiple alternatively spliced transcript variants encoding different isoforms have been identified.

**Synonyms:**

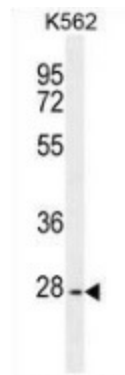
PTPN20A, PTPN20B, RP11-142117.1

**Note:**

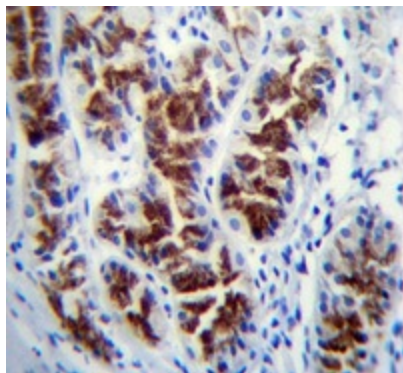
**Molecular Weight:** 26kd Isoform 6. 48423 Da

**Protein Families:**

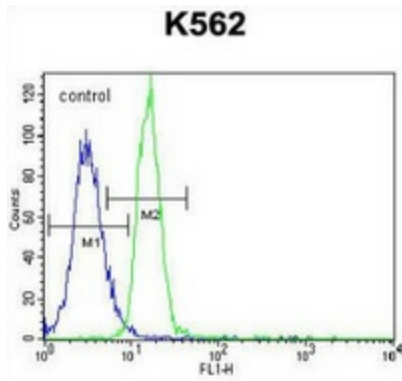
Druggable Genome, Phosphatase

**Product images:**

Western blot analysis in K562 cell line lysates (35ug/lane) using PTPN20 antibody. This demonstrates the PTPN20A antibody detected the PTPN20A protein (arrow).



Immunohistochemistry analysis in human stomach tissue (Formalin-fixed, Paraffin-embedded) using PTPN20 antibody, followed by peroxidase conjugated secondary antibody and DAB staining. This data demonstrates the use of PTPN20 antibody for IHC. Clinical relevance has not been evaluated.



Flow cytometric analysis of K562 cells (right histogram) compared to a negative control cell (left histogram) using PTPN20 antibody., followed by FITC-conjugated goat-anti-rabbit secondary antibodies.