

## Product datasheet for **AP53332PU-N**

### Phospholamban (PLN) (Thr7) Rabbit Polyclonal Antibody

#### Product data:

Product Type:	Primary Antibodies
Applications:	FC, IHC, WB
Recommended Dilution:	<b>Western blot:</b> 1/1000. <b>Flow cytometry:</b> 1/10-50. <b>Immunohistochemistry on Paraffin sections:</b> 1/50-1/100.
Reactivity:	Human, Mouse
Host:	Rabbit
Isotype:	Ig
Clonality:	Polyclonal
Immunogen:	KLH conjugated synthetic peptide selected between 1-30 amino of Human Phospholamban
Specificity:	This antibody recognizes Phospholamban (Thr17)
Formulation:	PBS containing 0.09% (W/V) Sodium Azide as preservative State: Aff - Purified State: Liquid purified Ig fraction
Concentration:	lot specific
Purification:	Protein A column, followed by peptide affinity purification
Conjugation:	Unconjugated
Storage:	Store undiluted at 2-8°C for one month or (in aliquots) at -20°C for longer. Avoid repeated freezing and thawing.
Stability:	Shelf life: one year from despatch.
Gene Name:	phospholamban
Database Link:	<a href="#">Entrez Gene 5350 Human P26678</a>



[View online »](#)

**Background:**

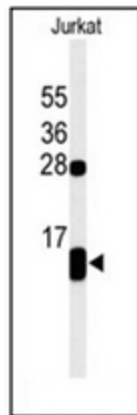
PLB is a 52 amino acid phosphoprotein which regulates the calcium pump of cardiac sarcoplasmic reticulum (SR). PLB is an oligomer of five identical subunits each having a cytoplasmic and transmembrane domain. The cytoplasmic domain (residues 1 to 25) contains the phosphorylation sites and is highly basic and readily cleaved by proteases; whereas the transmembrane domain (residues 25 to 52) is mostly hydrophobic, protease resistant and stabilizes the pentamer.

**Synonyms:**

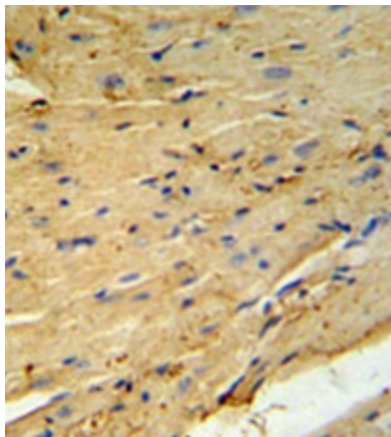
Cardiac phospholamban, PLB, PLN

**Note:**

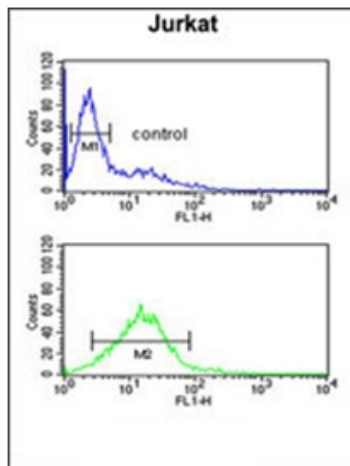
**Molecular Weight:** 6109 Da

**Product images:**

Western blot analysis of PLB-Thr17 in Jurkat cell line lysates (35ug/lane). PLB (arrow) was detected using the purified Pab.



Immunohistochemistry analysis in formalin fixed and paraffin embedded mouse heart tissue using PLB-Thr17 followed by peroxidase conjugation of the secondary antibody and DAB staining. This data demonstrates the use of the PLB-T17 Antibody for immunohistochemistry. Clinical relevance has not been evaluated.



Flow cytometric analysis of Jurkat cells using PLB-Thr17 (bottom histogram) compared to a negative control cell (top histogram). FITC-conjugated goat-anti-rabbit secondary antibodies were used for the analysis