

Product datasheet for **AP52792PU-N**

MYLK3 (Center) Rabbit Polyclonal Antibody

Product data:

Product Type:	Primary Antibodies
Applications:	IHC, WB
Recommended Dilution:	Immunohistochemistry on Paraffin sections: 1/10-1/50. Western blot: 1/100-1/500. Enzyme immunoassay: 1/1000.
Reactivity:	Human
Host:	Rabbit
Isotype:	Ig
Clonality:	Polyclonal
Immunogen:	Synthetic peptide - KLH conjugated - corresponding to the central region (between 542-570aa) of human MLCK / MYLK3
Specificity:	This antibody recognizes human MYLK / MYLK3.
Formulation:	PBS with 0.09% (W/V) Sodium azide State: Aff - Purified State: Liquid purified Ig fraction
Concentration:	lot specific
Purification:	Purified through a Protein A column followed by peptide affinity purification
Conjugation:	Unconjugated
Storage:	Store undiluted at 2-8°C for one month or (in aliquots) at -20°C for longer. Avoid repeated freezing and thawing.
Stability:	Shelf life: one year from despatch.
Gene Name:	myosin light chain kinase 3
Database Link:	Entrez Gene 91807 Human Q32MK0
Background:	Phosphorylation of cardiac myosin heavy chains (like MYH7B) and light chains (like MYL2) by a kinase, such as MYLK3, potentiates the force and rate of cross-bridge recruitment in cardiac myocytes [<i>Chan et al., 2008; PubMed 18202317</i>].
Synonyms:	MYLK3, Putative myosin light chain kinase 3



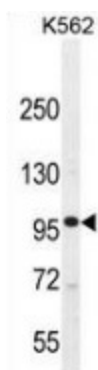
[View online »](#)

Note: **Molecular Weight:** 88393 Da

Protein Families: Druggable Genome, Protein Kinase

Protein Pathways: Calcium signaling pathway, Focal adhesion, Regulation of actin cytoskeleton, Vascular smooth muscle contraction

Product images:



Western blot analysis in K562 cell line lysates (35ug/lane) using MLCK antibody. This demonstrates this antibody detected the MLCK protein (arrow).