

Product datasheet for **AP52704PU-N**

MLH1 (Center) Rabbit Polyclonal Antibody

Product data:

Product Type:	Primary Antibodies
Applications:	FC, WB
Recommended Dilution:	Flow cytometry: 1/10-1/50. Western blot: 1/100-1/500. Enzyme immunoassay: 1/1000.
Reactivity:	Human
Host:	Rabbit
Isotype:	Ig
Clonality:	Polyclonal
Immunogen:	Synthetic peptide - KLH conjugated - corresponding to the central region (between 459-488aa) of human MLH1.
Specificity:	This antibody recognizes MLH1.
Formulation:	PBS with 0.09% (W/V) Sodium azide State: Aff - Purified State: Liquid purified Ig fraction
Concentration:	lot specific
Purification:	Purified through a Protein A column followed by peptide affinity purification
Conjugation:	Unconjugated
Storage:	Store undiluted at 2-8°C for one month or (in aliquots) at -20°C for longer. Avoid repeated freezing and thawing.
Stability:	Shelf life: one year from despatch.
Gene Name:	mutL homolog 1
Database Link:	Entrez Gene 4292 Human P40692



[View online »](#)

Background: The MLH1 gene was identified as a locus frequently mutated in hereditary nonpolyposis colon cancer (HNPCC). It is a human homolog of the E. coli DNA mismatch repair gene mutL, consistent with the characteristic alterations in microsatellite sequences (RER+phenotype) found in HNPCC. Alternative splicing results in multiple transcript variants encoding distinct isoforms. Additional transcript variants have been described, but their full-length natures have not been determined.

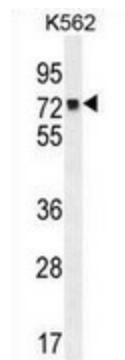
Synonyms: DNA mismatch repair protein Mlh1, COCA2

Note: **Molecular Weight:** 84601 Da

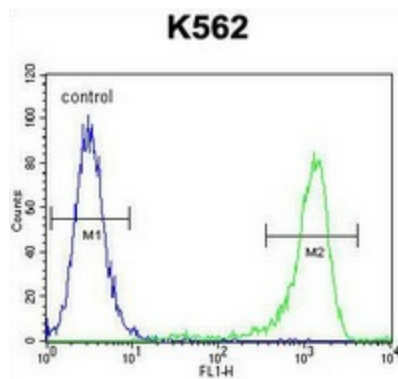
Protein Families: Druggable Genome

Protein Pathways: Colorectal cancer, Endometrial cancer, Mismatch repair, Pathways in cancer

Product images:



Western blot analysis in K562 cell line lysates (35ug/lane) using MLH1 antibody. This demonstrates the MLH1 antibody detected the MLH1 protein (arrow).



Flow cytometric analysis of K562 cells (right histogram) compared to a negative control cell (left histogram) using MLH1 antibody., followed by FITC-conjugated goat-anti-rabbit secondary antibodies.