

Product datasheet for **AP52641PU-N**

MCM7 (N-term) Rabbit Polyclonal Antibody

Product data:

Product Type:	Primary Antibodies
Applications:	WB
Recommended Dilution:	ELISA: 1/1000. Western Blot: 1/100-1/500.
Reactivity:	Human
Host:	Rabbit
Isotype:	Ig
Clonality:	Polyclonal
Immunogen:	KLH conjugated synthetic peptide between 113-142 amino acids from the N-terminal region of human MCM7
Specificity:	This antibody recognizes Human MCM7 (N-term).
Formulation:	PBS containing 0.09% (W/V) Sodium Azide as preservative State: Aff - Purified State: Liquid purified Ig fraction
Concentration:	lot specific
Purification:	Protein A column, followed by peptide affinity purification
Conjugation:	Unconjugated
Storage:	Store undiluted at 2-8°C for one month or (in aliquots) at -20°C for longer. Avoid repeated freezing and thawing.
Stability:	Shelf life: one year from despatch.
Gene Name:	minichromosome maintenance complex component 7
Database Link:	Entrez Gene 4176 Human P33993



[View online »](#)

Background:

The protein encoded by this gene is one of the highly conserved mini-chromosome maintenance proteins (MCM) that are essential for the initiation of eukaryotic genome replication. The hexameric protein complex formed by the MCM proteins is a key component of the pre-replication complex (pre_RC) and may be involved in the formation of replication forks and in the recruitment of other DNA replication related proteins. The MCM complex consisting of this protein and MCM2, 4 and 6 proteins possesses DNA helicase activity, and may act as a DNA unwinding enzyme. Cyclin D1-dependent kinase, CDK4, is found to associate with this protein, and may regulate the binding of this protein with the tumorsuppressor protein RB1/RB. Alternatively spliced transcript variants encoding distinct isoforms have been reported.

Synonyms:

CDC47, MCM2, CDC47 homolog, P1.1-MCM3

Note:

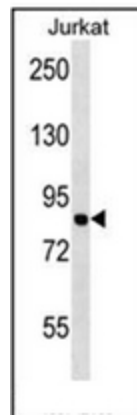
Molecular Weight: 81308 Da

Protein Families:

Transcription Factors

Protein Pathways:

Cell cycle, DNA replication

Product images:

Western blot analysis of MCM7 Antibody (N-term) in Jurkat cell line lysates (35ug/lane). This demonstrates the MCM7 antibody detected the MCM7 protein (arrow).