

Product datasheet for **AP51788PU-N**

GATM (N-term) Rabbit Polyclonal Antibody

Product data:

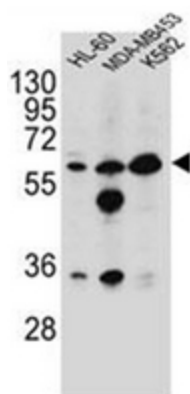
Product Type:	Primary Antibodies
Applications:	IHC, WB
Recommended Dilution:	ELISA: 1/1000. Western Blot: 1/100-1/500. Immunohistochemistry on Paraffin Sections: 1/50-1/100.
Reactivity:	Human
Host:	Rabbit
Isotype:	Ig
Clonality:	Polyclonal
Immunogen:	KLH conjugated synthetic peptide selected between amino acids 70 and 100 of Human Glycine amidinotransferase
Specificity:	This antibody recognizes Human Glycine amidinotransferase (N-term).
Formulation:	PBS containing 0.09% (W/V) Sodium Azide as preservative State: Aff - Purified State: Liquid purified Ig fraction
Concentration:	lot specific
Purification:	Protein A column, followed by peptide affinity purification
Conjugation:	Unconjugated
Storage:	Store undiluted at 2-8°C for one month or (in aliquots) at -20°C for longer. Avoid repeated freezing and thawing.
Stability:	Shelf life: one year from despatch.
Gene Name:	glycine amidinotransferase
Database Link:	Entrez Gene 2628 Human P50440
Synonyms:	Transamidinase, GATM, AGAT
Note:	Molecular Weight: 48455 Da
Protein Families:	Druggable Genome



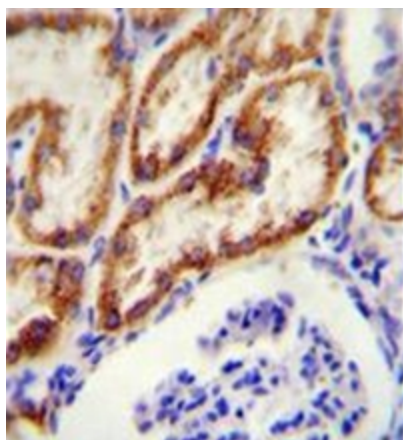
[View online »](#)

Protein Pathways: Arginine and proline metabolism, Glycine, serine and threonine metabolism, Metabolic pathways

Product images:



western blot analysis of Glycine amidinotransferase antibody (N-term) in HL-60, MDA-MB453, K562 cell line lysates (35ug/lane).



Immunohistochemistry analysis in formalin fixed and paraffin embedded human kidney tissue reacted with Glycine amidinotransferase antibody (N-term) followed by peroxidase conjugation of the secondary antibody and DAB staining.