

Product datasheet for **AP51738PU-N**

FUT4 (C-term) Rabbit Polyclonal Antibody

Product data:

Product Type:	Primary Antibodies
Applications:	FC, IHC, WB
Recommended Dilution:	ELISA: 1/1000. Western Blot: 1/100-1/500. Flow Cytometry: 1/10-1/50. Immunohistochemistry on Paraffin Sections: 1/50-1/100.
Reactivity:	Human
Host:	Rabbit
Isotype:	Ig
Clonality:	Polyclonal
Immunogen:	KLH conjugated synthetic peptide between 502-530 amino acids from the C-terminal region of Human Fucosyltransferase 4
Specificity:	This antibody recognizes Human and Mouse Fucosyltransferase 4 (C-term).
Formulation:	PBS containing 0.09% (W/V) Sodium Azide as preservative State: Purified State: Liquid purified Ig fraction
Concentration:	lot specific
Purification:	Saturated Ammonium Sulfate (SAS) precipitation followed by dialysis against PBS
Conjugation:	Unconjugated
Storage:	Store undiluted at 2-8°C for one month or (in aliquots) at -20°C for longer. Avoid repeated freezing and thawing.
Stability:	Shelf life: one year from despatch.
Gene Name:	fucosyltransferase 4
Database Link:	Entrez Gene 2526 Human P22083
Background:	The product of this gene transfers fucose to N-acetyllactosamine polysaccharides to generate fucosylated carbohydrate structures. It catalyzes the synthesis of the non-sialylated antigen, Lewis x (CD15).



[View online »](#)

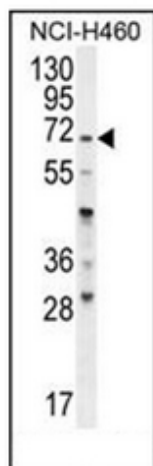
Synonyms: Fucosyltransferase IV, FUT4, ELFT, FCT3A, Fuc-TIV

Note: **Molecular Weight:** 59084 Da

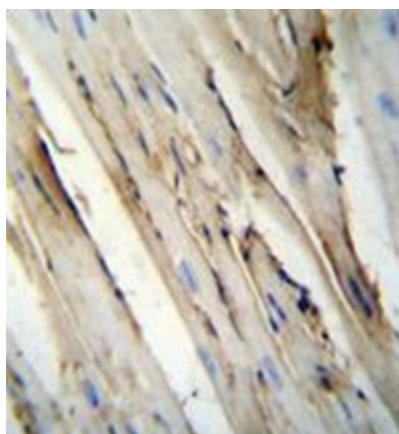
Protein Families: Transmembrane

Protein Pathways: Glycosphingolipid biosynthesis - lacto and neolacto series, Metabolic pathways

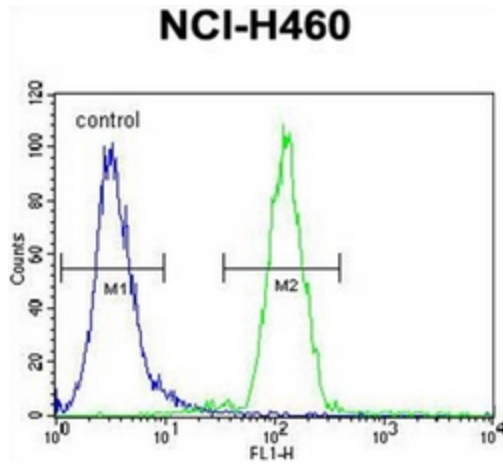
Product images:



Western blot analysis of FUT4 Antibody (C-term) in NCI-H460 cell line lysates (35ug/lane). This demonstrates the FUT4 antibody detected the FUT4 protein (arrow).



Immunohistochemistry analysis in formalin fixed and paraffin embedded mouse heart tissue reacted with FUT4 Antibody (C-term) followed by peroxidase conjugation of the secondary antibody and DAB staining.



Flow cytometric analysis of NCI-H460 cells using FUT4 Antibody (C-term) (right histogram) compared to a negative control cell (left histogram). FITC-conjugated goat-anti-rabbit secondary antibodies were used for the analysis.