

Product datasheet for **AP51689PU-N**

Fibromodulin (FMOD) (C-term) Rabbit Polyclonal Antibody

Product data:

| | |
|-----------------------|--|
| Product Type: | Primary Antibodies |
| Applications: | FC, IHC, WB |
| Recommended Dilution: | ELISA: 1/1000. Western Blot: 1/100-1/500. Flow Cytometry: 1/10-1/50. Immunohistochemistry on Paraffin Sections: 1/50-1/100. |
| Reactivity: | Human, Mouse |
| Host: | Rabbit |
| Isotype: | Ig |
| Clonality: | Polyclonal |
| Immunogen: | KLH conjugated synthetic peptide between 343~373 amino acids from the C-terminal region of Human Fibromodulin. |
| Specificity: | This antibody recognizes Human and Mouse Fibromodulin (C-term). |
| Formulation: | PBS containing 0.09% (W/V) Sodium Azide as preservative State: Aff - Purified State: Liquid purified Ig fraction |
| Concentration: | lot specific |
| Purification: | Affinity Chromatography on Protein A |
| Conjugation: | Unconjugated |
| Storage: | Store undiluted at 2-8°C for one month or (in aliquots) at -20°C for longer. Avoid repeated freezing and thawing. |
| Stability: | Shelf life: one year from despatch. |
| Gene Name: | fibromodulin |
| Database Link: | Entrez Gene 14264 Mouse Entrez Gene 2331 Human Q06828 |



[View online »](#)

Background:

Fibromodulin is a member of a family of small interstitial proteoglycans, containing a central region composed of leucine-rich repeats with 4 keratan sulfate chains flanked by disulfide-bonded terminal domains. It may participate in the assembly of the extracellular matrix as it interacts with type I and type II collagen fibrils and inhibits fibrillogenesis in vitro. It may also regulate TGF-beta activities by sequestering TGF-beta into the extracellular matrix.

Synonyms:

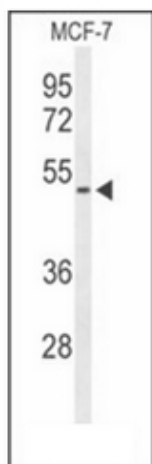
FMOD, FM, SLRR2E, KSPG fibromodulin

Note:

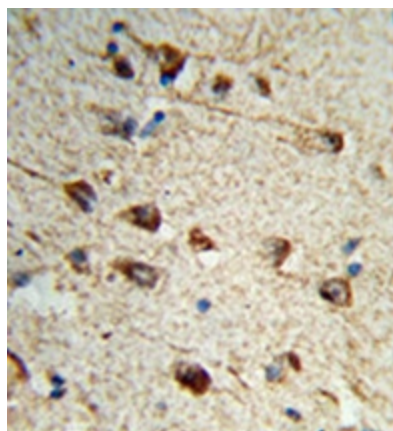
Molecular Weight: 43179 Da

Protein Families:

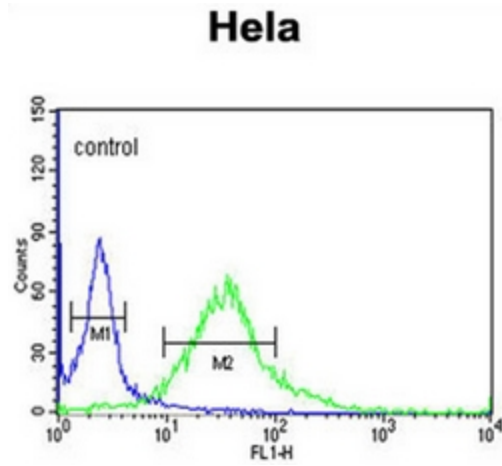
Druggable Genome, Secreted Protein

Product images:

Western blot analysis of Fibromodulin Antibody (C-term) in mouse cerebellum tissue lysates (35ug/lane). FMOD (arrow) was detected using the purified Pab.



Formalin-fixed and paraffin-embedded human brain tissue reacted with Fibromodulin Antibody (C-term), which was peroxidase-conjugated to the secondary antibody, followed by DAB staining.



Flow cytometric analysis of HeLa cells using Fibromodulin Antibody (C-term) (right histogram) compared to a negative control cell (left histogram). FITC-conjugated goat-anti-rabbit secondary antibodies were used for the analysis.