

## Product datasheet for **AP51486PU-N**

### EXTL3 (N-term) Rabbit Polyclonal Antibody

#### Product data:

Product Type:	Primary Antibodies
Applications:	IHC, WB
Recommended Dilution:	<b>ELISA:</b> 1/1000. <b>Western Blot:</b> 1/100-1/500. <b>Immunohistochemistry on Paraffin Sections:</b> 1/10-1/50.
Reactivity:	Human
Host:	Rabbit
Isotype:	Ig
Clonality:	Polyclonal
Immunogen:	KLH conjugated synthetic peptide between 352-382 amino acids from the N-terminal region of human EXTL3
Specificity:	This antibody recognizes Human EXTL3 (N-term).
Formulation:	PBS containing 0.09% (W/V) Sodium Azide as preservative State: Aff - Purified State: Liquid purified Ig fraction
Concentration:	lot specific
Purification:	Affinity Chromatography on Protein A
Conjugation:	Unconjugated
Storage:	Store undiluted at 2-8°C for one month or (in aliquots) at -20°C for longer. Avoid repeated freezing and thawing.
Stability:	Shelf life: one year from despatch.
Gene Name:	exostosin like glycosyltransferase 3
Database Link:	<a href="#">Entrez Gene 2137 Human O43909</a>
Background:	EXTL3 is probable glycosyltransferase (By similarity).
Synonyms:	EXT-related protein 1, EXTL1L, EXTR1, KIAA0519
Note:	<b>Molecular Weight:</b> 104749 Da

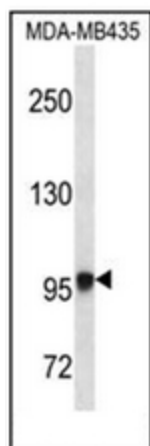


[View online »](#)

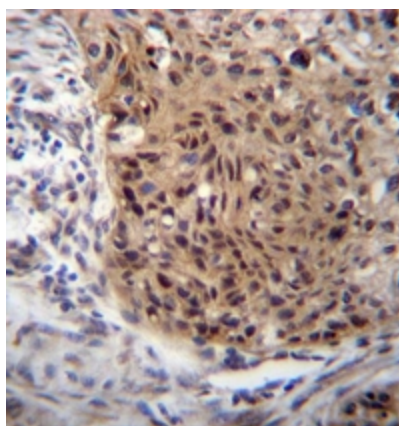
Protein Families: Transmembrane

Protein Pathways: Heparan sulfate biosynthesis, Metabolic pathways

### Product images:



Western blot analysis of EXTL3 Antibody (N-term) in MDA-MB435 cell line lysates (35ug/lane). This demonstrates the EXTL3 antibody detected the EXTL3 protein (arrow).



Formalin fixed and paraffin embedded human esophageal carcinoma reacted with EXTL3 Antibody (N-term) followed by peroxidase conjugation of the secondary antibody and DAB staining.