

Product datasheet for **AP51311PU-N**

OVCA1 (DPH1) (C-term) Rabbit Polyclonal Antibody

Product data:

Product Type:	Primary Antibodies
Applications:	WB
Recommended Dilution:	ELISA: 1/1000. Western Blot: 1/100-1/500.
Reactivity:	Human
Host:	Rabbit
Isotype:	Ig
Clonality:	Polyclonal
Immunogen:	KLH conjugated synthetic peptide between 383-412 amino acids from the C-terminal region of Human DPH1
Specificity:	This antibody recognizes Human DPH1 / OVAC1 (C-term).
Formulation:	PBS with 0.09% (W/V) Sodium Azide as preservative State: Aff - Purified State: Liquid purified Ig fraction
Concentration:	lot specific
Purification:	Affinity Chromatography on Protein A
Conjugation:	Unconjugated
Storage:	Store undiluted at 2-8°C for one month or (in aliquots) at -20°C for longer. Avoid repeated freezing and thawing.
Stability:	Shelf life: one year from despatch.
Gene Name:	diphthamide biosynthesis 1
Database Link:	Entrez Gene 1801 Human Q9BZG8
Background:	Diphthamide is a unique posttranslationally modified histidine found only in translation elongation factor-2 (EEF2; MIM 130610). This modification is conserved from archaebacteria to humans and serves as the target for ADP-ribosylation and inactivation of EEF2 by diphtheria toxin (DT) and Pseudomonas exotoxin A. DPH1 is 1 of several enzymes involved in synthesis of diphthamide in EEF2 (Liu et al., 2004 [PubMed 15485916]). [supplied by OMIM].

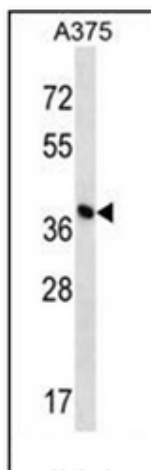


[View online »](#)

Synonyms: DPH2L, DPH2L1

Note: **Molecular Weight:** 48805 Da

Product images:



Western blot analysis of DPH1 / OVAC1 Antibody (C-term) in A375 cell line lysates (35ug/lane). This demonstrates the DPH1 antibody detected the DPH1 protein (arrow).