

Product datasheet for **AP51226PU-N**

DDX6 (Center) Rabbit Polyclonal Antibody

Product data:

Product Type:	Primary Antibodies
Applications:	IHC, WB
Recommended Dilution:	ELISA: 1/1000. Western Blot: 1/100-1/500. Immunohistochemistry on Paraffin Sections: 1/50-1/100.
Reactivity:	Human
Host:	Rabbit
Isotype:	Ig
Clonality:	Polyclonal
Immunogen:	KLH conjugated synthetic peptide between 354~384 amino acids from the Central region of Human DDX6.
Specificity:	This antibody recognizes Human DEAD box protein 6 (Center).
Formulation:	PBS State: Aff - Purified State: Liquid purified Ig fraction Preservative: 0.09% Sodium Azide
Concentration:	lot specific
Purification:	Affinity Chromatography on Protein A
Conjugation:	Unconjugated
Storage:	Store undiluted at 2-8°C for one month or (in aliquots) at -20°C for longer. Avoid repeated freezing and thawing.
Stability:	Shelf life: one year from despatch.
Gene Name:	DEAD-box helicase 6
Database Link:	Entrez Gene 1656 Human P26196
Background:	This gene encodes a member of the DEAD box protein family. The protein is an RNA helicase found in P-bodies and stress granules, and functions in translation suppression and mRNA degradation. It is required for microRNA-induced gene silencing.



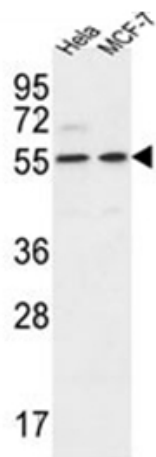
[View online »](#)

Synonyms: DDX-6, HLR2, RCK, Oncogene RCK, DEAD box protein 6

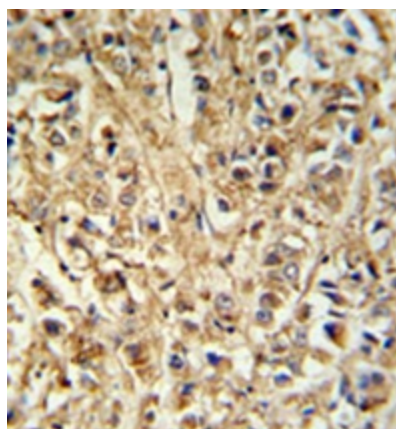
Note: **Molecular Weight:** 54417 Da

Protein Pathways: RNA degradation

Product images:



Western blot analysis of DDX6 Antibody (Center) in HeLa, MCF-7 cell line lysates (35ug/lane). This demonstrates the DDX6 antibody detected the DDX6 protein (arrow).



Formalin fixed, paraffin embedded breast carcinoma reacted with DDX6 Antibody (Center) followed by peroxidase conjugation of the secondary antibody and DAB staining.