

Product datasheet for **AP51195PU-N**

DCC (Center) Rabbit Polyclonal Antibody

Product data:

Product Type:	Primary Antibodies
Applications:	IHC, WB
Recommended Dilution:	ELISA: 1/1000. Western Blot: 1/100-1/500. Immunohistochemistry on Paraffin Sections: 1/10-1/50.
Reactivity:	Human, Mouse
Host:	Rabbit
Isotype:	Ig
Clonality:	Polyclonal
Immunogen:	KLH conjugated synthetic peptide between 642-670 amino acids from the Central region of Human DCC.
Specificity:	This antibody recognizes Human and Mouse DCC (Center).
Formulation:	PBS State: Aff - Purified State: Liquid purified Ig fraction Preservative: 0.09% Sodium Azide
Concentration:	lot specific
Purification:	Affinity Chromatography on Protein A
Conjugation:	Unconjugated
Storage:	Store undiluted at 2-8°C for one month or (in aliquots) at -20°C for longer. Avoid repeated freezing and thawing.
Stability:	Shelf life: one year from despatch.
Gene Name:	DCC netrin 1 receptor
Database Link:	Entrez Gene 13176 Mouse Entrez Gene 1630 Human P43146



[View online »](#)

Background:

This gene encodes a netrin 1 receptor. The transmembrane protein is a member of the immunoglobulin superfamily of cell adhesion molecules, and mediates axon guidance of neuronal growth cones towards sources of netrin 1 ligand. The cytoplasmic tail interacts with the tyrosine kinases Src and focal adhesion kinase (FAK, also known as PTK2) to mediate axon attraction. The protein partially localizes to lipid rafts, and induces apoptosis in the absence of ligand. The protein functions as a tumor suppressor, and is frequently mutated or downregulated in colorectal cancer and esophageal carcinoma.

Synonyms:

IGDCC1, Tumor suppressor protein DCC, Colorectal cancer suppressor, CRC18, CRCR1

Note:

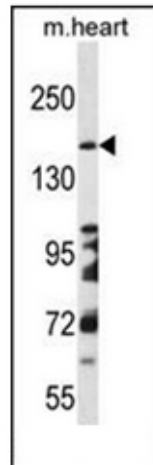
Molecular Weight: 158457 Da

Protein Families:

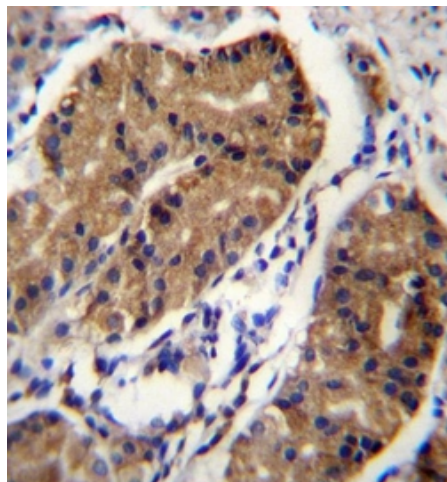
Druggable Genome, Transmembrane

Protein Pathways:

Axon guidance, Colorectal cancer, Pathways in cancer

Product images:

Western blot analysis of Netrin receptor DCC Antibody in Mouse heart tissue lysates (35ug/lane). This demonstrates the DCC antibody detected the DCC protein (arrow).



Formalin fixed and paraffin embedded human stomach tissue stained with Netrin receptor DCC Antibody followed by peroxidase conjugation of the secondary antibody and DAB staining.