

Product datasheet for **AP51127PU-N**

delta 2 Catenin (CTNND2) (C-term) Rabbit Polyclonal Antibody

Product data:

Product Type:	Primary Antibodies
Applications:	IHC, WB
Recommended Dilution:	Peptide ELISA: 1/1000. Western Blot: 1/1000. Immunohistochemistry on Paraffin Sections: 1/10-1/50.
Reactivity:	Human, Mouse
Host:	Rabbit
Isotype:	Ig
Clonality:	Polyclonal
Immunogen:	KLH conjugated synthetic peptide between 1131-1159 amino acids from the C-terminal region of Human CTNND2
Specificity:	This antibody reacts to CTNND2.
Formulation:	PBS State: Aff - Purified State: Liquid purified Ig fraction Preservative: 0.09% (W/V) Sodium Azide
Concentration:	lot specific
Purification:	Protein A column, followed by peptide affinity purification
Conjugation:	Unconjugated
Storage:	Store undiluted at 2-8°C for one month or (in aliquots) at -20°C for longer. Avoid repeated freezing and thawing.
Stability:	Shelf life: one year from despatch.
Predicted Protein Size:	132656 Da
Gene Name:	catenin delta 2
Database Link:	Entrez Gene 18163 Mouse Entrez Gene 1501 Human Q9UQB3



[View online »](#)

Background:

This gene encodes an adhesive junction associated protein of the armadillo/beta-catenin superfamily and is implicated in brain and eye development and cancer formation. The protein encoded by this gene promotes the disruption of E-cadherin based adherens junction to favor cell spreading upon stimulation by hepatocyte growth factor. This gene is overexpressed in prostate adenocarcinomas and is associated with decreased expression of tumor suppressor E-cadherin in this tissue. This gene resides in a region of the short arm of chromosome 5 that is deleted in Cri du Chat syndrome.

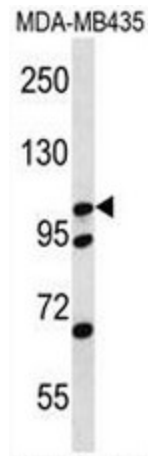
Synonyms:

CTNND2, NPRAP, Delta-catenin, Neurojungin, GT24

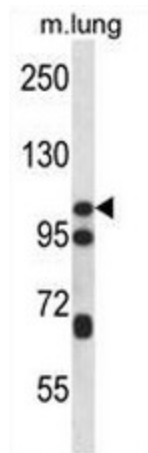
Protein Families:

Druggable Genome

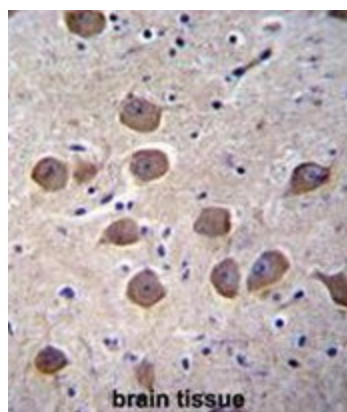
Product images:



CTNND2 Antibody (C-term) western blot analysis in MDA-MB435 cell line lysates (35ug/lane). This demonstrates the CTNND2 antibody detected the CTNND2 protein (arrow).



CTNND2 Antibody (C-term) western blot analysis in mouse lung tissue lysates (35ug/lane). This demonstrates the CTNND2 antibody detected the CTNND2 protein (arrow).



CTNND2 Antibody (C-term)
immunohistochemistry analysis in formalin fixed and paraffin embedded human brain tissue followed by peroxidase conjugation of the secondary antibody and DAB staining. This data demonstrates the use of CTNND2 Antibody (C-term) for immunohistochemistry. Clinical relevance has not been evaluated.