

Product datasheet for **AP50916PU-N**

CHTF18 (C-term) Rabbit Polyclonal Antibody

Product data:

Product Type:	Primary Antibodies
Applications:	WB
Recommended Dilution:	ELISA: 1/1000. Western blot: 1/100 - 1/500.
Reactivity:	Human
Host:	Rabbit
Isotype:	Ig
Clonality:	Polyclonal
Immunogen:	KLH conjugated synthetic peptide between 913-943 amino acids from the C-terminal region of human CHTF18
Specificity:	This antibody reacts to CHTF18.
Formulation:	PBS State: Aff - Purified State: Liquid purified Ig fraction Preservative: 0.09% (W/V) sodium azide
Concentration:	lot specific
Purification:	Affinity chromatography on Protein A
Conjugation:	Unconjugated
Storage:	Store undiluted at 2-8°C for one month or (in aliquots) at -20°C for longer. Avoid repeated freezing and thawing.
Stability:	Shelf life: one year from despatch.
Predicted Protein Size:	107383 Da
Gene Name:	chromosome transmission fidelity factor 18
Database Link:	Entrez Gene 63922 Human Q8WVB6

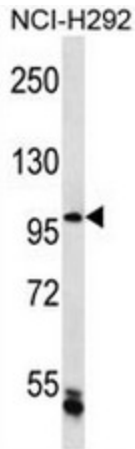


[View online »](#)

Background: CHTF18, CHTF8 (MIM 613202), and DCC1 (DSCC1; MIM 613203) are components of an alternative replication factor C (RFC) (see MIM 600404) complex that loads PCNA (MIM 176740) onto DNA during S phase of the cell cycle (Merkle et al., 2003 [PubMed 12766176]; Bermudez et al., 2003 [PubMed 12930902]).

Synonyms: hCTF18, C16orf41, CHL12

Product images:



CHTF18 Antibody (C-term) western blot analysis in NCI-H292 cell line lysates (35ug/lane). This demonstrates the CHTF18 antibody detected the CHTF18 protein (arrow).