

## Product datasheet for **AP50726PU-N**

### Calpain 6 (CAPN6) (Center) Rabbit Polyclonal Antibody

#### Product data:

Product Type:	Primary Antibodies
Applications:	IHC, WB
Recommended Dilution:	<b>ELISA:</b> 1/1000. <b>Western blot:</b> 1/100 - 1/500. <b>Immunohistochemistry on paraffin sections:</b> 1/10 - 1/50.
Reactivity:	Human
Host:	Rabbit
Isotype:	Ig
Clonality:	Polyclonal
Immunogen:	KLH conjugated synthetic peptide between 289-319 amino acids from the Central region of human CAPN6
Specificity:	This antibody reacts to CAPN6.
Formulation:	PBS State: Aff - Purified State: Liquid purified Ig fraction Preservative: 0.09% (W/V) sodium azide
Concentration:	lot specific
Purification:	Affinity Chromatography on Protein A
Conjugation:	Unconjugated
Storage:	Store undiluted at 2-8°C for one month or (in aliquots) at -20°C for longer. Avoid repeated freezing and thawing.
Stability:	Shelf life: one year from despatch.
Predicted Protein Size:	74576 Da
Gene Name:	calpain 6
Database Link:	<a href="#">Entrez Gene 827 Human</a> <a href="#">Q9Y6Q1</a>



[View online »](#)

**Background:**

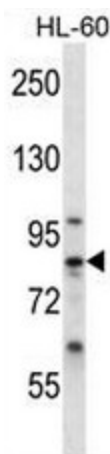
Calpains are ubiquitous, well-conserved family of calcium-dependent, cysteine proteases. The calpain proteins are heterodimers consisting of an invariant small subunit and variable large subunits. The large subunit possesses a cysteine protease domain, and both subunits possess calcium-binding domains. Calpains have been implicated in neurodegenerative processes, as their activation can be triggered by calcium influx and oxidative stress. The protein encoded by this gene is highly expressed in the placenta. Its C-terminal region lacks any homology to the calmodulin-like domain of other calpains. The protein lacks critical active site residues and thus is suggested to be proteolytically inactive. The protein may play a role in tumor formation by inhibiting apoptosis and promoting angiogenesis.

**Synonyms:**

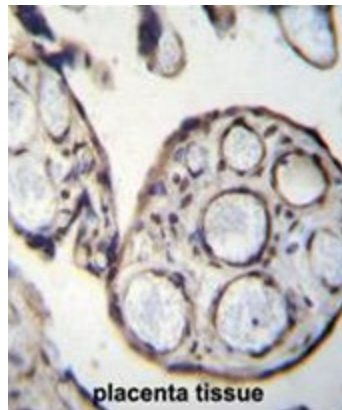
Calpamodulin, CAPN6, CALPM, CANPX

**Protein Families:**

Druggable Genome, Protease

**Product images:**


CAPN6 Antibody (Center) western blot analysis in HL-60 cell line lysates (35ug/lane). This demonstrates the CAPN6 antibody detected the CAPN6 protein (arrow).



CAPN6 Antibody (Center) immunohistochemistry analysis in formalin fixed and paraffin embedded human placenta tissue followed by peroxidase conjugation of the secondary antibody and DAB staining. This data demonstrates the use of CAPN6 Antibody (Center) for immunohistochemistry. Clinical relevance has not been evaluated.