

Product datasheet for **AP50698PU-N**

CA6 (C-term) Rabbit Polyclonal Antibody

Product data:

Product Type:	Primary Antibodies
Applications:	IHC, WB
Recommended Dilution:	ELISA: 1/1000. Western blot: 1/100 - 1/500. Immunohistochemistry on paraffin sections: 1/10 - 1/50.
Reactivity:	Human
Host:	Rabbit
Isotype:	Ig
Clonality:	Polyclonal
Immunogen:	KLH conjugated synthetic peptide between 245-275 amino acids from the C-terminal region of human CA6
Specificity:	This antibody reacts to CA6.
Formulation:	PBS State: Aff - Purified State: Liquid purified Ig fraction Preservative: 0.09% (W/V) sodium azide
Concentration:	lot specific
Purification:	Affinity chromatography on Protein A
Conjugation:	Unconjugated
Storage:	Store the antibody undiluted at 2-8°C for one month or (in aliquots) at -20°C for longer. Avoid repeated freezing and thawing.
Stability:	Shelf life: one year from despatch.
Predicted Protein Size:	35367 Da
Gene Name:	carbonic anhydrase 6
Database Link:	Entrez Gene 765 Human P23280



[View online »](#)

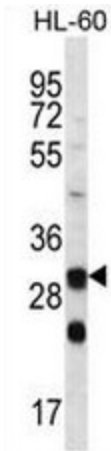
Background: The protein encoded by this gene is one of several isozymes of carbonic anhydrase. This protein is found only in salivary glands and saliva and protein may play a role in the reversible hydration of carbon dioxide though its function in saliva is unknown.

Synonyms: Carbonic anhydrase VI, Carbonate dehydratase VI, Secreted carbonic anhydrase, Salivary carbonic anhydrase, CA6, CA-VI

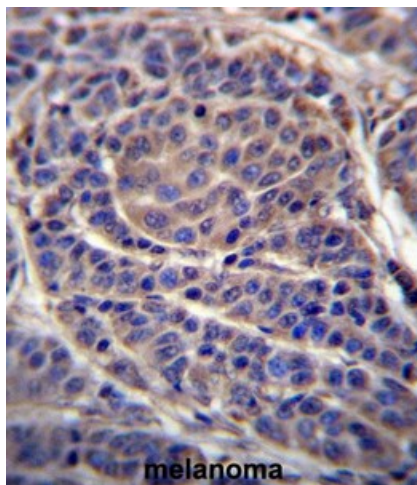
Protein Families: Druggable Genome, Secreted Protein

Protein Pathways: Nitrogen metabolism

Product images:



CA6 Antibody (C-term) western blot analysis in HL-60 cell line lysates (35ug/lane). This demonstrates the CA6 antibody detected the CA6 protein (arrow).



CA6 Antibody (C-term) immunohistochemistry analysis in formalin fixed and paraffin embedded human melanoma followed by peroxidase conjugation of the secondary antibody and DAB staining. This data demonstrates the use of CA6 Antibody (C-term) for immunohistochemistry. Clinical relevance has not been evaluated.