

## Product datasheet for **AP50175PU-N**

### Angiotensin 1 (ANGPT1) (C-term) Rabbit Polyclonal Antibody

#### Product data:

Product Type:	Primary Antibodies
Applications:	WB
Recommended Dilution:	<b>ELISA:</b> 1/1000. <b>Western blotting:</b> 1/1000.
Reactivity:	Human
Host:	Rabbit
Isotype:	Ig
Clonality:	Polyclonal
Immunogen:	KLH conjugated synthetic peptide between 374-402 amino acids from the C-terminal region of human ANGPT1
Specificity:	This antibody reacts to Angiotensin-1.
Formulation:	PBS with 0.09% (W/V) sodium azide as preservative State: Aff - Purified State: Liquid purified Ig fraction
Concentration:	lot specific
Purification:	Affinity chromatography on Protein A
Conjugation:	Unconjugated
Storage:	Store the antibody undiluted at 2-8°C for one month or (in aliquots) at -20°C for longer. Avoid repeated freezing and thawing.
Stability:	Shelf life: one year from despatch.
Gene Name:	angiotensin 1
Database Link:	<a href="#">Entrez Gene 284 Human Q15389</a>



[View online »](#)

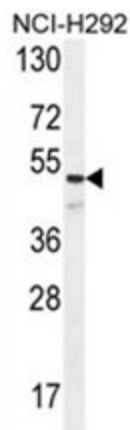
**Background:** Angiopoietins are proteins with important roles in vascular development and angiogenesis. All angiopoietins bind with similar affinity to an endothelial cell-specific tyrosine-protein kinase receptor. The protein encoded by this gene is a secreted glycoprotein that activates the receptor by inducing its tyrosine phosphorylation. It plays a critical role in mediating reciprocal interactions between the endothelium and surrounding matrix and mesenchyme. The protein also contributes to blood vessel maturation and stability, and may be involved in early development of the heart.

**Synonyms:** ANG-1, ANG1, ANGPT1, KIAA0003

**Note:** **Molecular Weight:** 57513 Da

**Protein Families:** Druggable Genome, ES Cell Differentiation/IPS, Secreted Protein

**Product images:**



ANGPT1 Antibody (C-term) western blot analysis in NCI-H292 cell line lysates (35ug/lane). This demonstrates the ANGPT1 antibody detected the ANGPT1 protein (arrow).