

## Product datasheet for **AP50028PU-N**

### **ABHD11 (Center) Rabbit Polyclonal Antibody**

#### **Product data:**

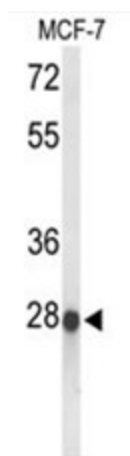
Product Type:	Primary Antibodies
Applications:	WB
Recommended Dilution:	<b>ELISA:</b> 1/1000. <b>Western blotting:</b> 1/100 - 1/500.
Reactivity:	Human
Host:	Rabbit
Isotype:	Ig
Clonality:	Polyclonal
Immunogen:	KLH conjugated synthetic peptide between 183~213 amino acids from the Central region of human ABHDB
Specificity:	This antibody reacts to ABHD11.
Formulation:	PBS containing 0.09% (W/V) sodium azide as preservative State: Aff - Purified State: Liquid purified Ig fraction
Concentration:	lot specific
Purification:	Affinity chromatography on Protein A
Conjugation:	Unconjugated
Storage:	Store the antibody undiluted at 2-8°C for one month or (in aliquots) at -20°C for longer. Avoid repeated freezing and thawing.
Stability:	Shelf life: one year from despatch.
Gene Name:	abhydrolase domain containing 11
Database Link:	<a href="#">Entrez Gene 83451 Human Q8NFV4</a>
Background:	ABHDB encodes a protein containing an alpha/beta hydrolase fold domain. This protein is deleted in Williams syndrome, a multisystem developmental disorder caused by the deletion of contiguous genes at 7q11.23.
Synonyms:	WBSCR21, PP1226



[View online »](#)

Note: **Molecular Weight:** 34690 Da

**Product images:**



Western blot analysis of ABHD11 Antibody (Center) in MCF-7 cell line lysates (35 ug/lane). ABHD11 (arrow) was detected using the purified Pab.