

## Product datasheet for **AP31860PU-N**

### MLX Goat Polyclonal Antibody

#### Product data:

Product Type:	Primary Antibodies
Applications:	ELISA, IHC
Recommended Dilution:	<b>Peptide ELISA:</b> 1/128000 (Detection Limit). <b>Western blot:</b> Preliminary experiments in Human, Mouse and Rat Liver lysates gave no specific signal but low background (at antibody concentration up to 1µg/ml). We would appreciate any feedback from people in the field - have any results been reported with other antibodies/lysates? <b>Immunohistochemistry on Paraffin Sections:</b> 2.5-3.8 µg/ml. In paraffin embedded Human Placenta shows nuclear staining of trophoblasts.
Reactivity:	Bovine, Canine, Human, Mouse, Rat
Host:	Goat
Clonality:	Polyclonal
Immunogen:	Peptide with sequence from the internal region of the protein sequence according to NP_937848.1; NP_937847.1; NP_733752.1.
Specificity:	This antibody is expected to recognize all three reported isoforms (NP_937848.1, NP_937847.1, NP_733752.1).
Formulation:	Tris buffered saline, pH~7.3 containing 0.02% Sodium Azide as preservative and 0.5% BSA as stabilizer State: Aff - Purified State: Liquid purified Ig fraction
Concentration:	lot specific
Purification:	Ammonium Sulphate Precipitation followed by antigen Affinity Chromatography using the immunizing peptide
Conjugation:	Unconjugated
Storage:	Store the antibody undiluted at 2-8°C for one month or (in aliquots) at -20°C for longer. Avoid repeated freezing and thawing.
Stability:	Shelf life: one year from despatch.
Gene Name:	MLX, MAX dimerization protein



[View online »](#)

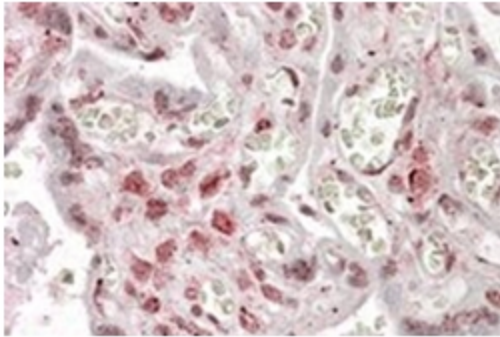
**Database Link:** [Entrez Gene 21428 Mouse](#)[Entrez Gene 360631 Rat](#)[Entrez Gene 6945 Human](#)  
[Q9UH92](#)

**Background:** MLX belongs to the family of basic helix-loop-helix leucine zipper (bHLH-Zip) transcription factors. These factors form heterodimers with Mad proteins and play a role in proliferation, determination and differentiation. This protein may act to diversify Mad family function by its restricted association with a subset of the Mad family of transcriptional repressors, namely, Mad1 and Mad4.

**Synonyms:** MLX, TCFL4

**Protein Families:** Druggable Genome, Transcription Factors

**Product images:**



Staining of paraffin embedded Human Placenta using MLX Antibody at 3.8 ug/ml. Steamed antigen retrieval with citrate buffer pH 6, AP-staining.