

Product datasheet for **AP31823PU-N**

beta III Tubulin (TUBB3) Chicken Polyclonal Antibody

Product data:

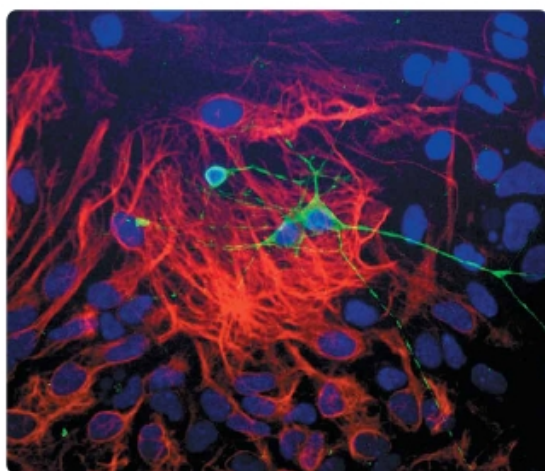
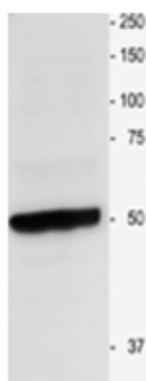
Product Type:	Primary Antibodies
Applications:	IF, IHC, WB
Recommended Dilution:	Western Blot. Immunocytochemistry. Immunohistochemistry. <i>Recommended Dilutions:</i> 1/2000-1/5000 for Western Blots. 1/1000-1/2000 for Immunohistochemistry and Immunocytochemistry using 2% paraformaldehyde-fixed tissues or cells. Quality Control: Each of the three antibodies was analyzed by Immunohistochemistry (at a dilution of 1/2000) using Fluorescein-labeled Goat anti-Chicken IgY (1/500 dilution, Cat.-No AP31795FC-N) as the secondary reagent.
Reactivity:	Human, Rat
Host:	Chicken
Isotype:	IgY
Clonality:	Polyclonal
Immunogen:	Chickens were immunized with three synthetic peptide KLH conjugated corresponding to different regions of the Beta-Tubulin 3 gene product, but are shared between the Human (AAL28094) and Rat (AAM28438) protein sequences. Production: After repeated injections, immune eggs were collected, and the IgY fractions were purified from the yolks. These IgY fractions were then affinity-purified using a peptide column, and the concentrations of the eluates adjusted to 0.3 mg/ml. Finally, equal volumes of each of the three affinity-purified anti-peptide antibodies were mixed, and the preparation was filter-sterilized.
Specificity:	Recognizes Tubulin beta-3.
Formulation:	10mM PBS, pH 7.2 containing 0.02% Sodium Azide as preservative. State: Aff - Purified State: Liquid purified (filter sterilized) IgY fraction.
Concentration:	lot specific
Purification:	Affinity Chromatography.



[View online »](#)

Conjugation:	Unconjugated
Storage:	Store the antibody undiluted in the dark at 2-8°C.
Stability:	Shelf life: one year from despatch.
Gene Name:	tubulin beta 3 class III
Database Link:	Entrez Gene 246118 Rat Entrez Gene 10381 Human Q13509
Background:	Human Beta-Tubulin 3 is a 50,432 dalton structural protein (450 amino acid) expressed in neurons of the PNS and CNS. It contributes to microtubule stability in neuronal cell bodies and axons, and plays a role in axonal transport.
Synonyms:	Tubulin beta-3 chain, Tubulin beta-III, Tubulin beta-4
Protein Families:	Druggable Genome, ES Cell Differentiation/IPS
Protein Pathways:	Gap junction, Pathogenic Escherichia coli infection

Product images:



Dissociated cell culture of a neonatal Mouse brain showing Beta-Tubulin III (green staining) of neurons. These cultures were counter-stained with a Rabbit anti-GFAP antibody (red staining) to identify astrocytes, and with DAPI (blue staining) to localize nuclei.