

## Product datasheet for **AP31626PU-N**

### **DARC (ACKR1) (1-50) Rabbit Polyclonal Antibody**

#### **Product data:**

Product Type:	Primary Antibodies
Applications:	ELISA, IF, IHC
Recommended Dilution:	<b>ELISA:</b> 1/40000. <b>Immunofluorescence:</b> 1/100 - 1/500. <b>Immunohistochemistry on Paraffin Sections:</b> 1/200.
Reactivity:	Human
Host:	Rabbit
Isotype:	IgG
Clonality:	Polyclonal
Immunogen:	Synthetic peptide from human DARC (aa 1-50)
Specificity:	This antibody detects endogenous levels of total CD234 protein.
Formulation:	PBS (without Mg <sup>2+</sup> , Ca <sup>2+</sup> ), pH 7.4, 150 mM Sodium Chloride, 0.02% Sodium Azide and 50% Glycerol State: Aff - Purified State: Liquid purified Ig fraction
Purification:	Immunoaffinity Chromatography
Conjugation:	Unconjugated
Storage:	Store the antibody (in aliquots) at -20°C or lower. Avoid freeze-thaw cycles.
Stability:	Shelf life: one year from despatch.
Gene Name:	atypical chemokine receptor 1 (Duffy blood group)
Database Link:	<a href="#">Entrez Gene 2532 Human Q16570</a>



[View online »](#)

**Background:**

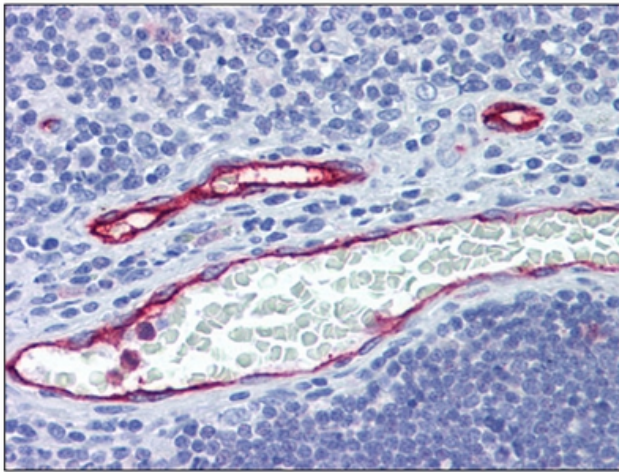
Duffy blood group antigens, part of the Chemokine Receptor family, appear to be multimeric erythrocyte-membrane protein receptors composed of different subunits. A glycoprotein, GPD, is the major subunit of the protein complex. Other components include the Rh, PGM1, Fy, and PEPC proteins. Duffy antigen is expressed by red blood cells, by postcapillary venule endothelium throughout the body, except in the liver, and by Purkinje cells of the cerebellum. Duffy negativity (lack of Duffy expression in bone marrow) has been linked to protection against malaria. In erythrocytes, the chemokines interleukin-8 and melanoma growth stimulatory activity (MGSA) activate Duffy antigen.

**Synonyms:**

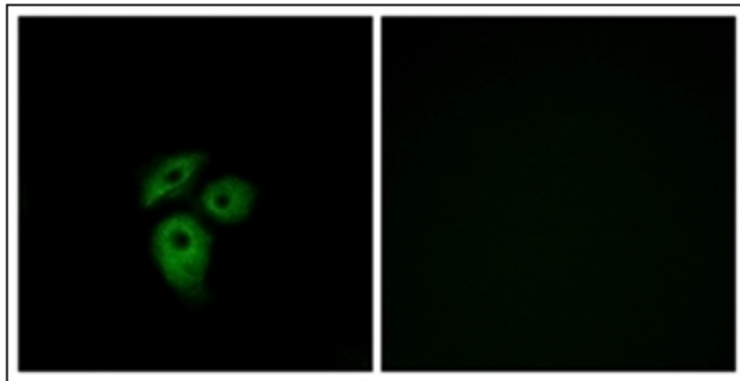
Duffy antigen/chemokine receptor, Fy glycoprotein, GpFy, Glycoprotein D, FY, GPD

**Protein Families:**

Druggable Genome, GPCR, Transmembrane

**Product images:**


Human Thymus, Vessels: Formalin-Fixed, Paraffin-Embedded (FFPE)



Immunofluorescence analysis of A549 cells, using CD234 Antibody (left). The picture on the right is treated with the synthesized peptide.