

## Product datasheet for **AP31620PU-N**

### gamma Catenin (JUP) (C-term) Rabbit Polyclonal Antibody

#### Product data:

Product Type:	Primary Antibodies
Applications:	ELISA, IHC, WB
Recommended Dilution:	<b>ELISA:</b> 1/20000. <b>Immunohistochemistry on Paraffin Sections:</b> 1/200. <b>Western Blot:</b> 1/500 - 1/1000.
Reactivity:	Human, Mouse, Rat
Host:	Rabbit
Isotype:	IgG
Clonality:	Polyclonal
Immunogen:	Synthetic peptide corresponding to the C-terminal region of Human Catenin-gamma.
Specificity:	This antibody detects endogenous levels of total Catenin-gamma protein.
Formulation:	PBS (without Mg <sup>2+</sup> , Ca <sup>2+</sup> ), pH 7.4, 150 mM Sodium Chloride, 0.02% Sodium Azide and 50% Glycerol State: Purified State: Liquid purified Ig fraction
Concentration:	lot specific
Purification:	Immunoaffinity Chromatography
Conjugation:	Unconjugated
Storage:	Store the antibody (in aliquots) at -20°C or lower. Avoid freeze-thaw cycles.
Stability:	Shelf life: one year from despatch.
Gene Name:	junction plakoglobin
Database Link:	<a href="#">Entrez Gene 16480 Mouse</a> <a href="#">Entrez Gene 81679 Rat</a> <a href="#">Entrez Gene 3728 Human P14923</a>



[View online »](#)

**Background:**

Junction Plakoglobin (JUP), also known as catenin gamma, is a major cytoplasmic protein that occurs in a soluble and a membrane-associated form and is the only known constituent common to the submembranous plaques of both kinds of adhering junctions, the desmosomes and the intermediate junctions. It is a component of the cadherin-catenin complex, which is predominantly localized where actin filaments anchor in adherens junctions of epithelial cells. The human plakoglobin gene localizes on chromosome 17q21. Gamma-catenin is regulated by the APC tumor suppressor and its oncogenic activity is distinct from that of beta-catenin.

**Synonyms:**

Desmoplakin-3, Desmoplakin III, Catenin gamma, JUP, CTNNG, DP3

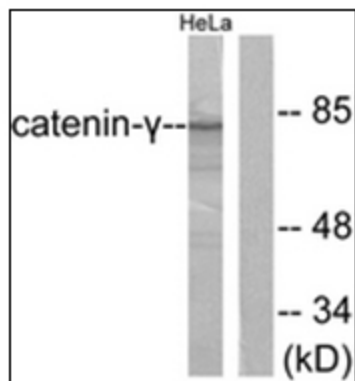
**Protein Families:**

Druggable Genome

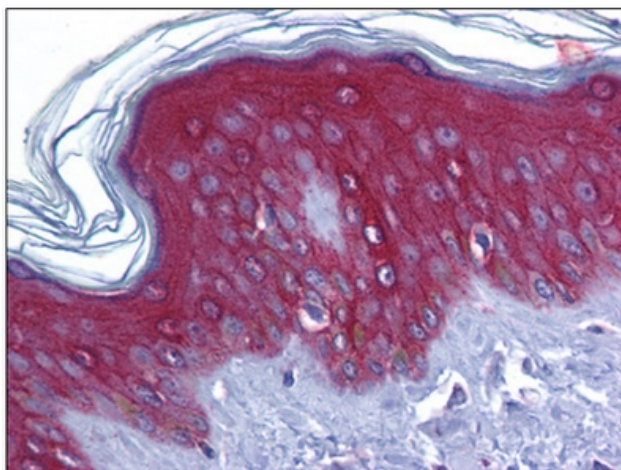
**Protein Pathways:**

Acute myeloid leukemia, Arrhythmogenic right ventricular cardiomyopathy (ARVC), Pathways in cancer

**Product images:**



Western blot analysis of extracts from HeLa cells, using Catenin-gamma Antibody. The lane on the right is treated with the synthesized peptide.



Human Skin: Formalin-Fixed, Paraffin-Embedded (FFPE)