

Product datasheet for **AP31600PU-N**

Haptoglobin (HP) Goat Polyclonal Antibody

Product data:

Product Type:	Primary Antibodies
Applications:	ELISA, IHC
Recommended Dilution:	ELISA. Immunohistochemistry on Paraffin Sections: 5 µg/ml.
Reactivity:	Human
Host:	Goat
Clonality:	Polyclonal
Immunogen:	Human Haptoglobin.
Specificity:	Recognizes Human Haptoglobin.
Formulation:	PBS, pH 7.2 State: Purified State: Liquid purified Ig fraction Preservative: 0.05% Sodium Azide
Concentration:	lot specific
Purification:	Immunoaffinity Chromatography
Conjugation:	Unconjugated
Storage:	Store the antibody undiluted at 2-8°C for one month or (in aliquots) at -20°C for longer. Avoid freeze-thaw cycles.
Stability:	Shelf life: one year from despatch.
Gene Name:	haptoglobin
Database Link:	Entrez Gene 3240 Human P00738



[View online »](#)

Background:

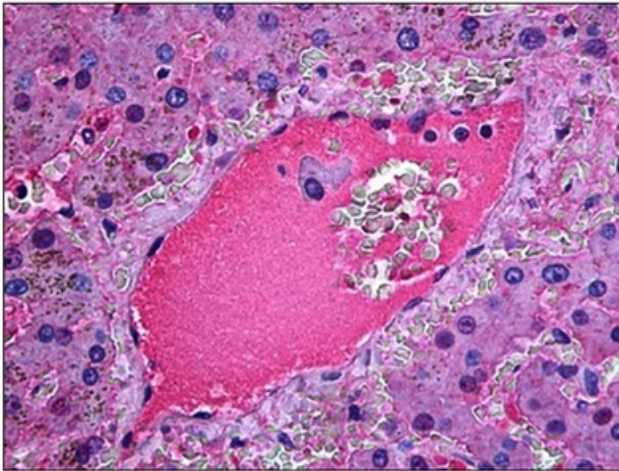
The Haptoglobin (HP) gene encodes a preproprotein, which is processed to yield both alpha and beta chains, which subsequently combine as a tetramer to produce haptoglobin. Haptoglobin functions to bind free plasma hemoglobin, which allows degradative enzymes to gain access to the hemoglobin, while at the same time preventing loss of iron through the kidneys and protecting the kidneys from damage by hemoglobin. Mutations in Haptoglobin and/or its regulatory regions cause ahaptoglobinemia or hypohaptoglobinemia. This gene has also been linked to diabetic nephropathy, the incidence of coronary artery disease in type 1 diabetes, Crohn's disease, inflammatory disease behavior, primary sclerosing cholangitis, susceptibility to idiopathic Parkinson's disease, and a reduced incidence of Plasmodium falciparum malaria. A similar duplicated gene is located next to this gene on chromosome 16. Multiple transcript variants encoding different isoforms have been found for this gene.

Synonyms:

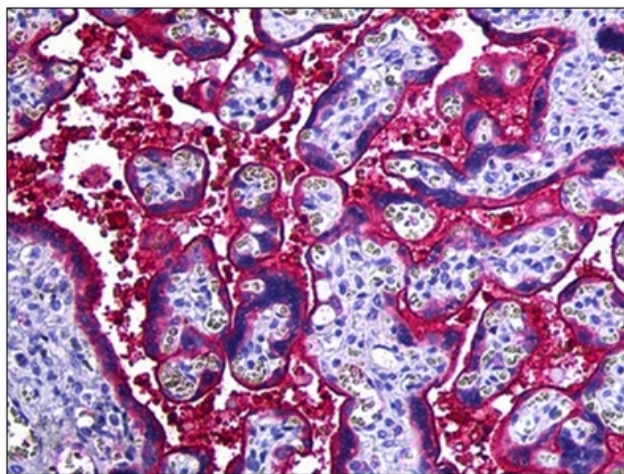
BP; haptoglobin; HP2-ALPHA-2; HPA1S; MGC111141

Protein Families:

Druggable Genome, Protease, Secreted Protein, Transmembrane

Product images:

Human Liver: Formalin-Fixed, Paraffin-Embedded (FFPE)



Human Placenta: Formalin-Fixed, Paraffin-Embedded (FFPE)