

Product datasheet for **AP31279PU-N**

Apolipoprotein H (APOH) Goat Polyclonal Antibody

Product data:

| | |
|-----------------------|---|
| Product Type: | Primary Antibodies |
| Applications: | ELISA, ID, IHC |
| Recommended Dilution: | ELISA. Immunodiffusion. Immunoelectrophoresis. Immunohistochemistry on Paraffin Sections: 5 µg/ml. |
| Reactivity: | Canine, Human, Porcine, Rat |
| Host: | Goat |
| Isotype: | IgG |
| Clonality: | Polyclonal |
| Immunogen: | Purified beta2-Glycoprotein-I (beta2GP-I) from human plasma. This protein is also known as apolipoprotein-H. |
| Specificity: | This antibody recognizes Human beta2GP-I as demonstrated by immunoelectrophoresis. A single precipitin arc is observed with normal plasma. No arc was seen with beta2GP-I deficient plasma. |
| Formulation: | 10mM HEPES, pH 7.4, 0.15M sodium chloride, 50% glycerol. State: Aff - Purified State: Liquid purified Ig fraction |
| Concentration: | lot specific |
| Purification: | Ammonium Sulfate Precipitation |
| Conjugation: | Unconjugated |
| Storage: | Store the antibody undiluted at 2-8°C for one month or (in aliquots) at -20°C for longer. Avoid repeated freezing and thawing. |
| Stability: | Shelf life: one year from despatch. |
| Gene Name: | apolipoprotein H |
| Database Link: | Entrez Gene 287774 RatEntrez Gene 350 Human P02749 |

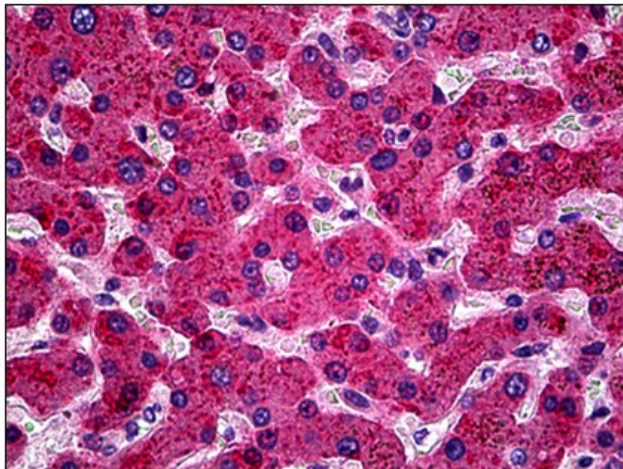


[View online »](#)

Synonyms: Beta-2-glycoprotein I, Beta2GPI, B2GPI, ApoH, Apo-H, APC Inhibitor, Anticardiolipin Cofactor, B2G1

Protein Families: Druggable Genome, Secreted Protein

Product images:



Human Liver: Formalin-Fixed, Paraffin-Embedded (FFPE)