

Product datasheet for **AP31192PU-N**

FOXO3 (N-term) Rabbit Polyclonal Antibody

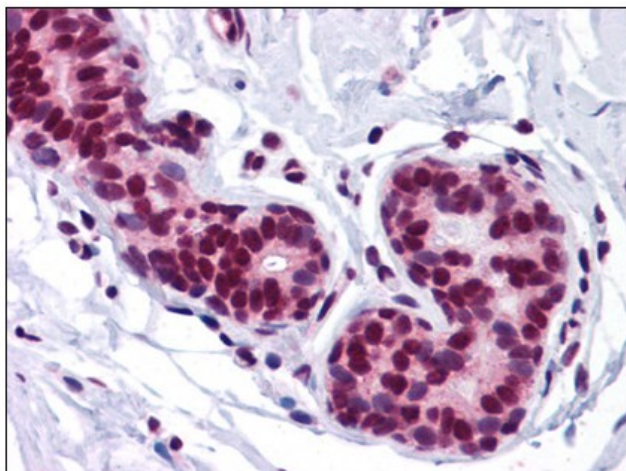
Product data:

Product Type:	Primary Antibodies
Applications:	ELISA, IF, IHC, WB
Recommended Dilution:	ELISA. Immunocytochemistry. Immunohistochemistry on Paraffin Sections: 5 µg/ml. Western Blot: 0.5 - 1 µg/ml.
Reactivity:	Human, Mouse, Rat
Host:	Rabbit
Isotype:	IgG
Clonality:	Polyclonal
Immunogen:	FOXO3 antibody was raised against synthetic peptide - KLH conjugated
Specificity:	This antibody reacts to FOXO3 / FOXO3A.
Formulation:	PBS containing 0.02% sodium azide as preservative State: Purified State: Liquid purified Ig fraction
Concentration:	lot specific
Purification:	Immunoaffinity chromatography
Conjugation:	Unconjugated
Storage:	Store the antibody undiluted at 2-8°C.
Stability:	Shelf life: one year from despatch.
Gene Name:	forkhead box O3
Database Link:	Entrez Gene 56484 Mouse Entrez Gene 294515 Rat Entrez Gene 2309 Human O43524
Synonyms:	FOXO3A, AF6q21 protein
Protein Families:	Druggable Genome, Transcription Factors
Protein Pathways:	Chemokine signaling pathway, Endometrial cancer, Neurotrophin signaling pathway, Non-small cell lung cancer

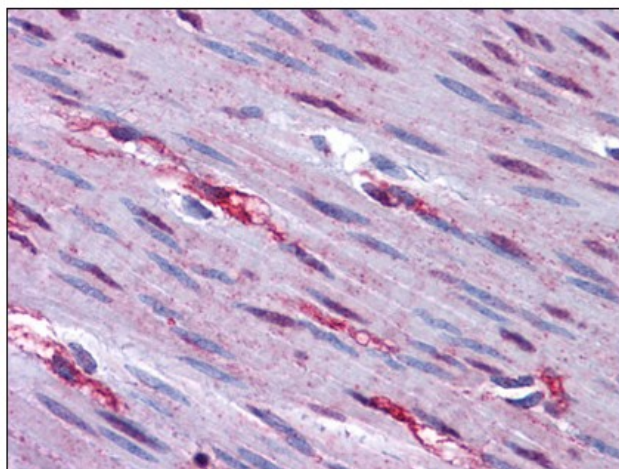


[View online »](#)

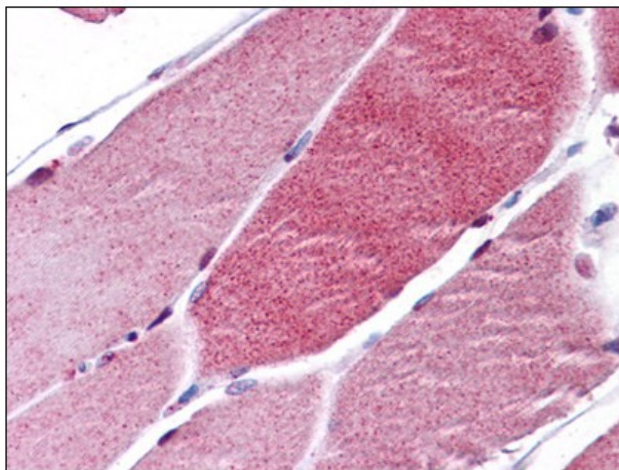
Product images:



Human Breast: Formalin-Fixed, Paraffin-Embedded (FFPE)



Human Colon, Muscularis Propria and Nerve: Formalin-Fixed, Paraffin-Embedded (FFPE)



Human Skeletal Muscle: Formalin-Fixed, Paraffin-Embedded (FFPE)