

Product datasheet for **AP23938PU-N**

Lin28 (LIN28A) (C-term) Rabbit Polyclonal Antibody

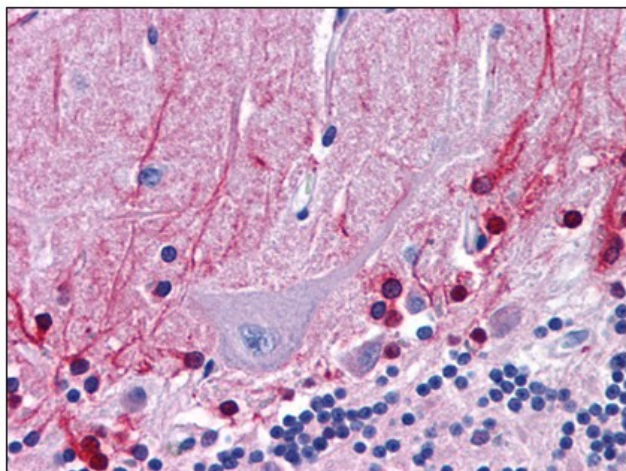
Product data:

Product Type:	Primary Antibodies
Applications:	ELISA, IHC, WB
Recommended Dilution:	ELISA. Immunohistochemistry on Paraffin Sections: 5 µg/ml. Western Blot: 1 - 2 µg/ml.
Reactivity:	Human
Host:	Rabbit
Clonality:	Polyclonal
Immunogen:	LIN28A antibody was raised against synthetic peptide - KLH conjugated
Specificity:	This antibody reacts to the C-term of Lin-28 Homolog A (LIN28A).
Formulation:	PBS containing 0.02% sodium azide as preservative State: Purified State: Liquid purified Ig fraction
Concentration:	lot specific
Purification:	Immunoaffinity Chromatography
Conjugation:	Unconjugated
Storage:	Store the antibody undiluted at 2-8°C.
Stability:	Shelf life: one year from despatch.
Gene Name:	lin-28 homolog A
Database Link:	Entrez Gene 79727 Human Q9H9Z2
Synonyms:	LIN-28, LIN28A, CSDD1, ZCCHC1
Protein Families:	Transcription Factors



[View online »](#)

Product images:



Human Brain, Cerebellum: Formalin-Fixed, Paraffin-Embedded (FFPE)