

Product datasheet for **AP23928PU-N**

Girdin (CCDC88A) (C-term) Rabbit Polyclonal Antibody

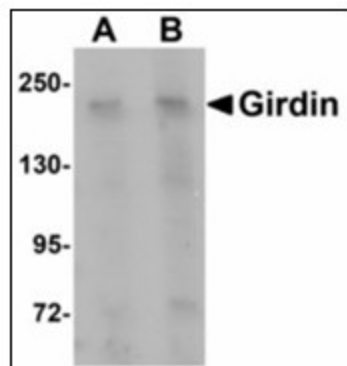
Product data:

Product Type:	Primary Antibodies
Applications:	ELISA, IHC, WB
Recommended Dilution:	ELISA. Immunohistochemistry on Paraffin Sections: 5 µg/ml. Western Blot: 1 - 2 µg/ml.
Reactivity:	Human, Mouse, Rat
Host:	Rabbit
Clonality:	Polyclonal
Immunogen:	CCDC88A antibody was raised against synthetic peptide - KLH conjugated
Specificity:	This antibody reacts to the C-term of Coiled-Coil Domain Containing 88A (CCDC88A).
Formulation:	PBS containing 0.02% sodium azide as preservative State: Purified State: Liquid purified Ig fraction
Concentration:	lot specific
Purification:	Immunoaffinity Chromatography
Conjugation:	Unconjugated
Storage:	Store the antibody undiluted at 2-8°C.
Stability:	Shelf life: one year from despatch.
Gene Name:	coiled-coil domain containing 88A
Database Link:	Entrez Gene 108686 Mouse Entrez Gene 305605 Rat Entrez Gene 55704 Human Q3V6T2
Synonyms:	CCDC88A, APE, GRDN, KIAA1212, GIV, HkRP1

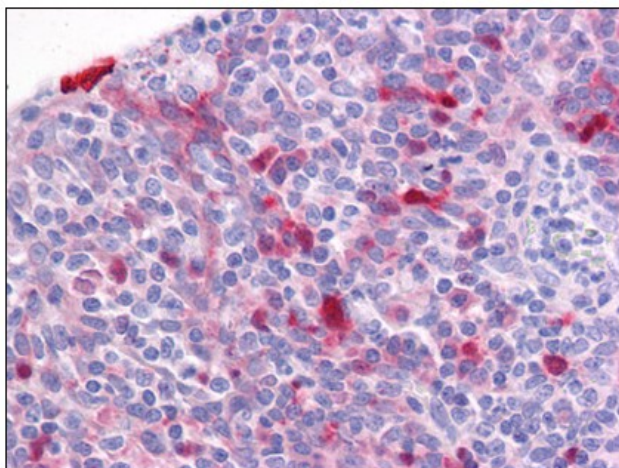


[View online »](#)

Product images:



Western blot analysis of Girdin in rat brain tissue lysate with Girdin antibody at (A) 1 and (B) 2 ug/ml.



Human Tonsil: Formalin-Fixed, Paraffin-Embedded (FFPE)