

Product datasheet for **AP23822PU-N**

PRODH (84-98) Goat Polyclonal Antibody

Product data:

Product Type:	Primary Antibodies
Applications:	ELISA, IHC
Recommended Dilution:	ELISA: 1/16000. Immunohistochemistry on Paraffin Sections: 3.75 µg/ml.
Reactivity:	Human, Mouse
Host:	Goat
Clonality:	Polyclonal
Immunogen:	Synthetic peptide from an internal region of human PRODH (NP_057419.2)
Specificity:	This antibody reacts to the internal region of PRODH.
Formulation:	Tris saline buffer, pH 7.3 containing 0.5% BSA as stabilizer and 0.02% sodium azide as preservative State: Aff - Purified State: Liquid purified Ig fraction
Concentration:	lot specific
Purification:	Immunoaffinity Chromatography
Conjugation:	Unconjugated
Storage:	Upon receipt, store (in aliquots) at -20°C to -80°C. Avoid repeated freezing and thawing.
Stability:	Shelf life: one year from despatch.
Gene Name:	proline dehydrogenase 1
Database Link:	Entrez Gene 19125 Mouse Entrez Gene 5625 Human O43272
Background:	PRODH is a mitochondrial protein that catalyzes the first step in proline degradation. Mutations in this gene are associated with hyperprolinemia type 1 and susceptibility to schizophrenia 4 (SCZD4). This gene is located on chromosome 22q11.21, a region which has also been associated with the contiguous gene deletion syndromes, DiGeorge and CATCH22. Alternatively spliced transcript variants encoding different isoforms have been found for this gene.



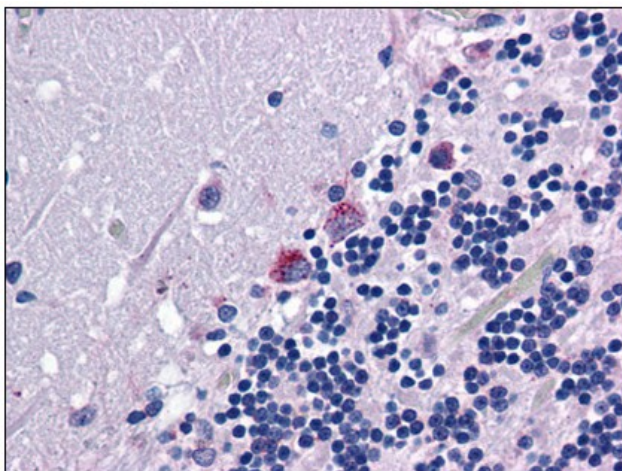
[View online »](#)

Synonyms: PIG6, POX2, Proline oxidase, Proline oxidase 2

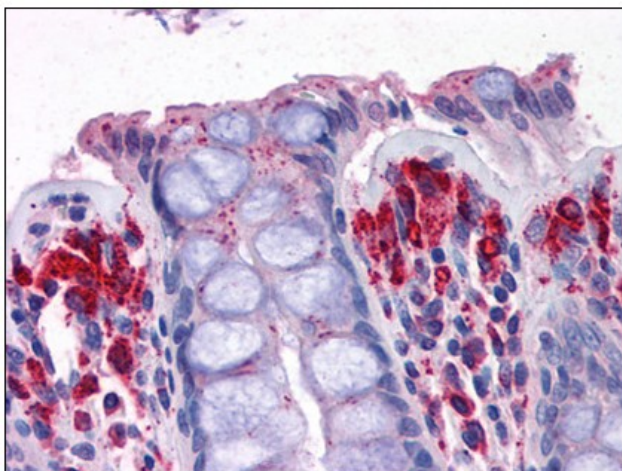
Protein Families: Druggable Genome

Protein Pathways: Arginine and proline metabolism, Metabolic pathways

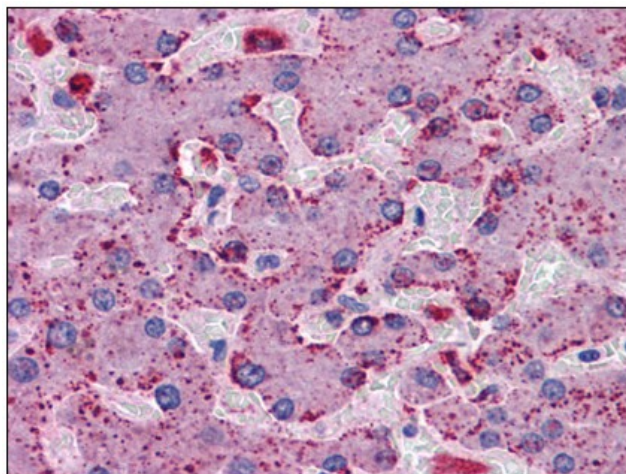
Product images:



Human Brain, Cerebellum: Formalin-Fixed, Paraffin-Embedded (FFPE)



Human Colon: Formalin-Fixed, Paraffin-Embedded (FFPE)



Human Liver: Formalin-Fixed, Paraffin-Embedded (FFPE)