

Product datasheet for **AP23607PU-N**

Isocitrate dehydrogenase (IDH1) (30-307) Rabbit Polyclonal Antibody

Product data:

Product Type:	Primary Antibodies
Applications:	IHC, WB
Recommended Dilution:	Immunohistochemistry on Paraffin Sections: 10 µg/ml. Western Blot: 1/500 - 1/3000.
Reactivity:	Bovine, Human, Mouse, Rat, Zebrafish
Host:	Rabbit
Clonality:	Polyclonal
Immunogen:	Recombinant protein fragment containing a sequence corresponding to a region within amino acids 30 and 307 of Human isocitrate dehydrogenase
Specificity:	This antibody reacts to human Putative Cytosolic Nadp-dependent Isocitrate Dehydrogenase (IDH1) at aa 30-307.
Formulation:	0.1 M Tris-glycine, pH 7.0 containing 10% Glycerol and 0.01% Thimerosal State: Aff - Purified State: Liquid purified Ig fraction
Concentration:	lot specific
Purification:	Immunoaffinity Chromatography
Conjugation:	Unconjugated
Storage:	Store the antibody (in aliquots) at -20°C. Avoid repeated freezing and thawing.
Stability:	Shelf life: one year from despatch.
Gene Name:	isocitrate dehydrogenase (NADP(+)) 1, cytosolic
Database Link:	Entrez Gene 15926 Mouse Entrez Gene 24479 Rat Entrez Gene 3417 Human O75874



[View online »](#)

Background:

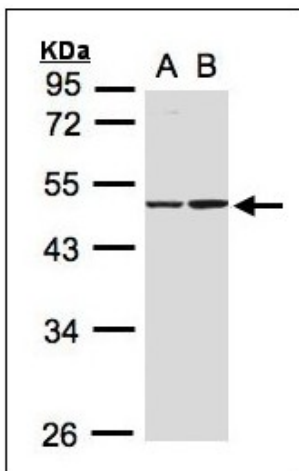
Isocitrate dehydrogenases catalyze the oxidative decarboxylation of isocitrate to 2-oxoglutarate. These enzymes belong to two distinct subclasses, one of which utilizes NAD(+) as the electron acceptor and the other NADP(+). Five isocitrate dehydrogenases have been reported: three NAD(+)-dependent isocitrate dehydrogenases, which localize to the mitochondrial matrix, and two NADP(+)-dependent isocitrate dehydrogenases, one of which is mitochondrial and the other predominantly cytosolic.

Synonyms:

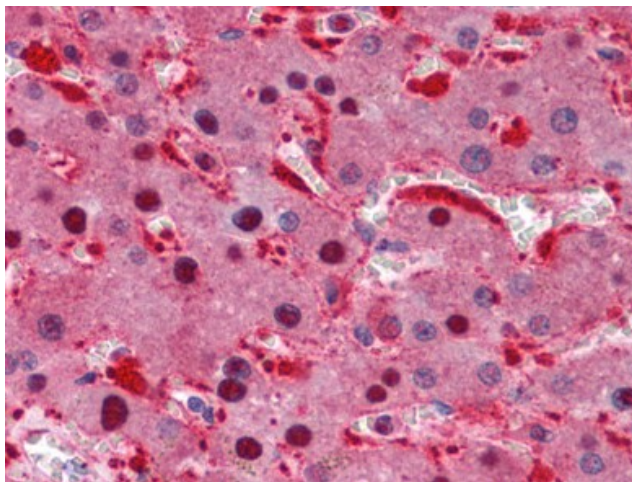
PICD, Cytosolic NADP-isocitrate dehydrogenase, ICDH, IDP, Oxalosuccinate decarboxylase

Protein Pathways:

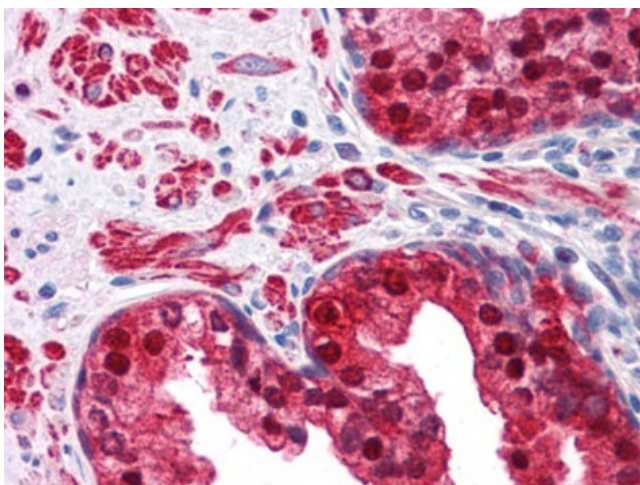
Citrate cycle (TCA cycle), Glutathione metabolism, Metabolic pathways

Product images:


Sample (30 ug whole cell lysate). A:A431. B:Raji. 10% SDS PAGE. IDH1 antibody diluted at 1/1000



Human Liver: Formalin-Fixed, Paraffin-Embedded (FFPE)



Human Prostate: Formalin-Fixed, Paraffin-Embedded (FFPE)