

Product datasheet for **AP23487PU-N**

RIP (RIPK1) (N-term) Rabbit Polyclonal Antibody

Product data:

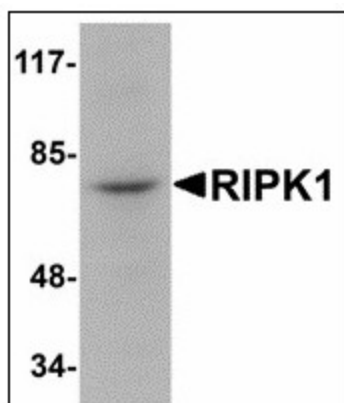
Product Type:	Primary Antibodies
Applications:	ELISA, IHC, WB
Recommended Dilution:	ELISA. Immunohistochemistry on Paraffin Sections: 5 µg/ml. Western Blot: 1 - 2 µg/ml.
Reactivity:	Human, Mouse, Rat
Host:	Rabbit
Clonality:	Polyclonal
Immunogen:	Synthetic peptide - KLH conjugated
Specificity:	This antibody reacts to the N-term of Receptor-interacting Serine/Threonine Kinase 1 (RIPK1).
Formulation:	PBS containing 0.02% sodium azide as preservative State: Liquid purified Ig fraction
Concentration:	lot specific
Purification:	Immunoaffinity Chromatography
Conjugation:	Unconjugated
Storage:	Store the antibody undiluted at 2-8°C.
Stability:	Shelf life: one year from despatch.
Gene Name:	receptor interacting serine/threonine kinase 1
Database Link:	Entrez Gene 19766 Mouse Entrez Gene 306886 Rat Entrez Gene 8737 Human Q13546
Background:	RIP1 belongs to the RIP subfamily of kinases. The RIP protein contains an N-terminal protein kinase domain, a C-terminal death domain, and a unique internal region. RIP interacts with the death receptors Fas and tumor necrosis receptor 1 (TNFR1) to stimulate apoptosis, SAPK/JNK, and NF-kappaB activation.
Synonyms:	RIPK1
Protein Families:	Druggable Genome, Protein Kinase



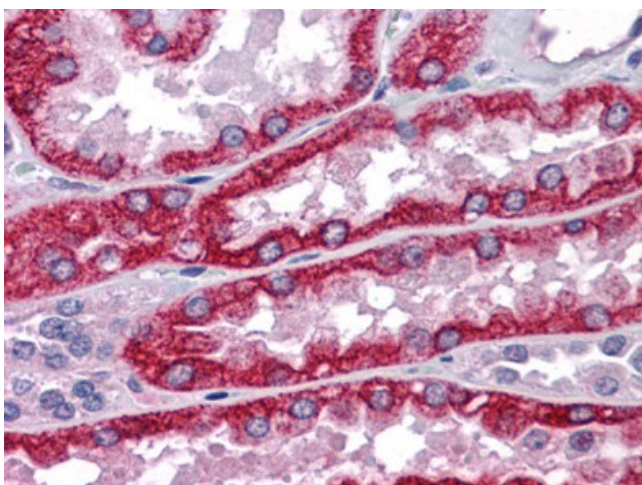
[View online »](#)

Protein Pathways: Apoptosis, Cytosolic DNA-sensing pathway, RIG-I-like receptor signaling pathway, Toll-like receptor signaling pathway

Product images:



Western blot analysis of RIPK1 in rat kidney tissue lysate with RIPK1 antibody at 1 ug/ml.



Human Kidney: Formalin-Fixed, Paraffin-Embedded (FFPE)