

Product datasheet for **AP23400PU-N**

CD18 (ITGB2) (N-term) Rabbit Polyclonal Antibody

Product data:

Product Type:	Primary Antibodies
Applications:	IHC, WB
Recommended Dilution:	Western blot: 1-2 µg/ml. Immunohistochemistry on paraffin sections: 1-2 µg/ml.
Reactivity:	Human, Mouse, Rat
Host:	Rabbit
Isotype:	IgG
Clonality:	Polyclonal
Immunogen:	A synthetic peptide mapping at the N-terminal of human Integrin β2
Specificity:	This antibody detects CD18 / ITGB2 (N-term). No cross reactivity with other proteins.
Formulation:	5mg BSA, 0.9mg NaCl, 0.2mg Na ₂ HPO ₄ , 0.05mg Thimerosal, 0.05mg Na ₃ State: Aff - Purified State: Lyophilized Ig fraction
Reconstitution Method:	0.2ml of distilled water will yield a concentration of 500µg/ml.
Purification:	Immunogen affinity purified
Conjugation:	Unconjugated
Storage:	Store at 2 - 8 °C for up to one month or (in aliquots) at -20 °C for longer. Avoid repeated freezing and thawing.
Stability:	Shelf life: one year from despatch.
Gene Name:	integrin subunit beta 2
Database Link:	Entrez Gene 16414 Mouse Entrez Gene 309684 Rat Entrez Gene 3689 Human P05107



[View online »](#)

Background:

The beta-2 integrin chain gene is designated ITGB2 and the leukocyte antigen has been designated CD18. The 3 alpha integrin chains associated individually with the beta-2 chain as a heterodimer have gene designations of ITGAL, ITGAM, and ITGAX, and leukocyte antigen designations of CD11A, CD11B, and CD11C, respectively. The expression of CD18 was increased in lymphoblastoid cells from persons with Down syndrome, consistent with the location of the gene on chromosome 211. The ITGB2 gene spans approximately 40 kb and contains 16 exons and all exon/intron boundaries conform to the GT/AG splicing consensus. Furthermore, ITGB2 was constitutively clustered. Although it was expressed on the cell surface at normal levels and was capable of function following extracellular stimulation, it could not be activated via the “inside-out” signaling pathways.

Synonyms:

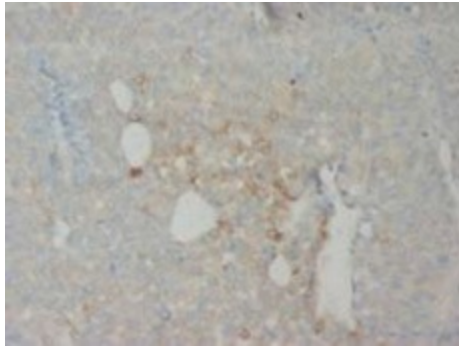
Integrin beta-2, MFI7

Protein Families:

Druggable Genome, Transmembrane

Protein Pathways:

Cell adhesion molecules (CAMs), Leukocyte transendothelial migration, Natural killer cell mediated cytotoxicity, Regulation of actin cytoskeleton, Viral myocarditis

Product images:

IHC staining with Integrin β 2 Polyclonal Antibody