

## Product datasheet for **AP23306PU-N**

### CD71 (TFRC) (C-term) Rabbit Polyclonal Antibody

#### Product data:

Product Type:	Primary Antibodies
Applications:	IHC, WB
Recommended Dilution:	<b>Western blot:</b> 1 µg/ml. <b>Immunohistochemistry on Paraffin Sections:</b> 1 µg/ml (Antigen Retrieval by heat is required).
Reactivity:	Human, Mouse, Rat
Host:	Rabbit
Isotype:	IgG
Clonality:	Polyclonal
Immunogen:	Synthetic peptide corresponding to a sequence at the C-terminal of Human CD71
Specificity:	This antibody detects CD71 / TFRC at C-term. No cross reactivity with other proteins.
Formulation:	5 mg BSA, 0.9 mg NaCl, 0.2 mg Na <sub>2</sub> HPO <sub>4</sub> , 0.05 mg Thimerosal and 0.05 mg Sodium Azide State: Aff - Purified State: Lyophilized purified Ig fraction
Reconstitution Method:	Restore with 0.2 ml of distilled water to a concentration of 0.5 mg/ml.
Purification:	Immunoaffinity Chromatography
Conjugation:	Unconjugated
Storage:	Store the antibody after reconstitution at 2-8°C for one month or (in aliquots) at -20 °C for longer. Avoid repeated freezing and thawing.
Stability:	Shelf life: one year from despatch.
Gene Name:	transferrin receptor
Database Link:	<a href="#">Entrez Gene 22042 Mouse</a> <a href="#">Entrez Gene 64678 Rat</a> <a href="#">Entrez Gene 7037 Human P02786</a>



[View online »](#)

**Background:**

CD71 is also known as transferrin receptor(TFRC). Nikinmaa and Schroder (1987) concluded that p90 and TFRC are the same protein: studies using monoclonal antibodies indicated that exhaustive precipitation of radioactively labeled lysates with one antibody removed all activity of lysates with the other. Peptide maps of antigens recognized with both antibodies showed great similarity and indicated that both antibodies react with the same antigen, the human transferrin receptor, but with different antigenic sites of the molecule. TFR is assigned to chromosome 3.

**Synonyms:**

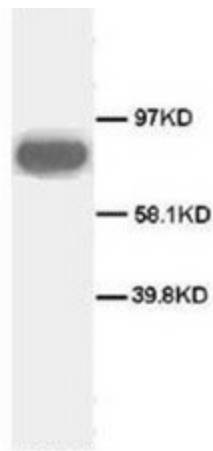
TfR1, p90, Transferrin receptor protein 1

**Protein Families:**

Druggable Genome, ES Cell Differentiation/IPS, Protease, Secreted Protein, Transmembrane

**Protein Pathways:**

Endocytosis, Hematopoietic cell lineage

**Product images:**

Western blot analysis of rat spleen sections using CD71 antibody