

## Product datasheet for **AP23293PU-N**

### Cytokeratin 8 (KRT8) (N-term) Rabbit Polyclonal Antibody

#### Product data:

Product Type:	Primary Antibodies
Applications:	IHC, WB
Recommended Dilution:	Western blot: 1 µg/ml. Immunohistochemistry on paraffin sections: 2 µg/ml.
Reactivity:	Human
Host:	Rabbit
Isotype:	IgG
Clonality:	Polyclonal
Immunogen:	Synthetic peptide corresponding to a sequence at the N-terminal of human CK8
Specificity:	This antibody detects Cytokeratin 8 (N-term).
Formulation:	5mg BSA, 0.9mg NaCl, 0.2mg Na <sub>2</sub> HPO <sub>4</sub> , 0.05mg Thimerosal, 0.05mg Na <sub>3</sub> State: Aff - Purified State: Lyophilized Ig fraction
Reconstitution Method:	0.2ml of distilled water will yield a concentration of 500µg/ml.
Purification:	Immunogen affinity purified
Conjugation:	Unconjugated
Storage:	Store at 2 - 8 °C for up to one month or (in aliquots) at -20 °C for longer. Avoid repeated freezing and thawing.
Stability:	Shelf life: one year from despatch.
Gene Name:	keratin 8
Database Link:	<a href="#">Entrez Gene 3856 Human P05787</a>



[View online »](#)

**Background:**

Cytokeratin 8 (CK8), also known as Keratin 8 (K8), is a type II keratin. Among the various intermediate filament (IF) proteins, cytokeratin 8 (CK8) is especially remarkable as it is produced early in embryogenesis, is the only type-II CK occurring in many simple epithelial cells, and can also be synthesized in certain non-epithelial cells. Cytokeratin 8 mRNA was abundant in fetal small intestine, placenta, pancreas, lung, liver, and kidney. Levels of cytokeratin 8 mRNA in placenta increased slightly during pregnancy. He et al. (2002) presented evidence that K8 is a new cytoplasmic target for JNK in Fas receptor-mediated signaling. The functional significance of this phosphorylation could relate to regulation of JNK signaling and/or regulation of keratin dynamics.

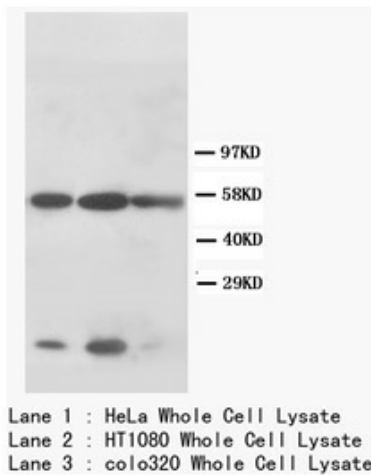
**Synonyms:**

KRT8, CYK8, Cytokeratin-8, CK8, Keratin-8, K8, Cytokeratin endo A

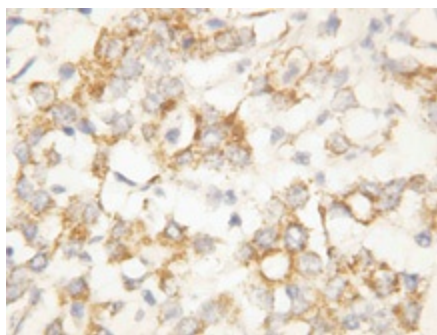
**Protein Families:**

Druggable Genome

**Product images:**



Cytokeratin 8 Polyclonal Antibody



Cytokeratin 8 Polyclonal Antibody