

Product datasheet for **AP23279PU-N**

CXCR2 Rabbit Polyclonal Antibody

Product data:

Product Type:	Primary Antibodies
Applications:	IHC, IP, WB
Recommended Dilution:	Western blot: At 1-2µg/ml with the appropriate system to detect CXCR2 in cells and tissues. Immunohistochemistry on paraffin sections: At 1-2µg/ml to detect CXCR2 in formalin fixed and paraffin embedded tissues. Boiling the sections is required. Immunoprecipitation.
Reactivity:	Human
Host:	Rabbit
Isotype:	IgG
Clonality:	Polyclonal
Immunogen:	Synthetic peptide mapping at the middle region of human CXCR2
Specificity:	This antibody detects CD182 / IL8RB (middle). No cross reactivity with other proteins.
Formulation:	5mg BSA, 0.9mg NaCl, 0.2mg Na ₂ HPO ₄ , 0.05mg Thimerosal, 0.05mg Na ₃ State: Aff - Purified State: Lyophilized Ig fraction
Reconstitution Method:	0.2ml of distilled water will yield a concentration of 500µg/ml.
Purification:	Immunogen affinity purified
Conjugation:	Unconjugated
Storage:	Store at 2 - 8 °C for up to one month or (in aliquots) at -20 °C for longer. Avoid repeated freezing and thawing.
Stability:	Shelf life: one year from despatch.
Gene Name:	C-X-C motif chemokine receptor 2
Database Link:	Entrez Gene 3579 Human P25025



[View online »](#)

Background:

CXCR2 is a receptor for Interleukin 8, which is a powerful neutrophil chemotactic factor. It is a member of the GPCR family (subfamily, chemokine). Binding of IL8 to the receptor causes activation of neutrophils. This response is mediated via a G-protein that activate a phosphatidylinositol-calcium second messenger system. This receptor binds to IL8 with a high affinity and to GRO/MGSA and NAP2 also with a high affinity. It has been reported to be expressed in a wide variety of tissues. ESTs have been isolated from human placenta and thymus libraries.

Synonyms:

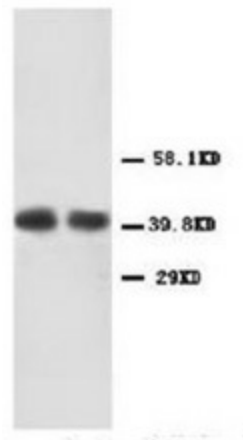
CXCR2, CXCR-2, GRO/MGSA receptor, IL-8 receptor type 2, CDw128b, IL8 receptor beta

Protein Families:

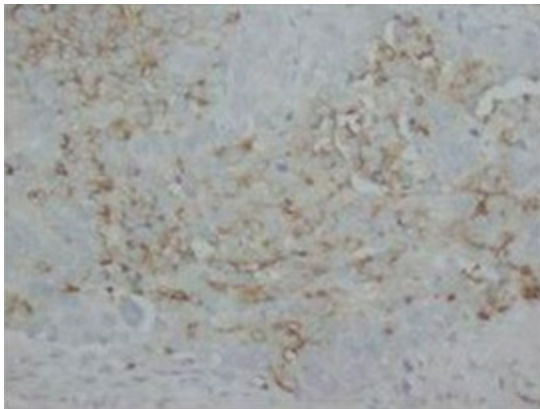
Druggable Genome, GPCR, Transmembrane

Protein Pathways:

Chemokine signaling pathway, Cytokine-cytokine receptor interaction, Endocytosis, Epithelial cell signaling in Helicobacter pylori infection

Product images:


Western blot analysis of human carcinoma of colon lysis using CXCR2 antibody



Immunohistochemical analysis of paraffin embedded Human lung cancer sections using CXCR2 antibody