

Product datasheet for **AP23255PU-N**

EAAT1 (SLC1A3) (C-term) Rabbit Polyclonal Antibody

Product data:

Product Type:	Primary Antibodies
Applications:	WB
Recommended Dilution:	Western blot: At 0.5-1µg/ml with the appropriate system to detect glast in cells and tissues.
Reactivity:	Human, Mouse, Rat
Host:	Rabbit
Isotype:	IgG
Clonality:	Polyclonal
Immunogen:	Synthetic peptide corresponding to a sequence at the C-terminal of the human Glast
Specificity:	This antibody detects SLC1A3 / EAAT1 at C-term.
Formulation:	5mg BSA, 0.9mg NaCl, 0.2mg Na ₂ HPO ₄ , 0.05mg Thimerosal, 0.05mg NaN ₃ State: Aff - Purified State: Lyophilized Ig fraction
Reconstitution Method:	0.2ml of distilled water will yield a concentration of 500µg/ml.
Purification:	Immunogen affinity purified
Conjugation:	Unconjugated
Storage:	Store at 2 - 8 °C for up to one month or (in aliquots) at -20 °C for longer. Avoid repeated freezing and thawing.
Stability:	Shelf life: one year from despatch.
Gene Name:	solute carrier family 1 member 3
Database Link:	Entrez Gene 20512 Mouse Entrez Gene 29483 Rat Entrez Gene 6507 Human P43003



[View online »](#)

Background:

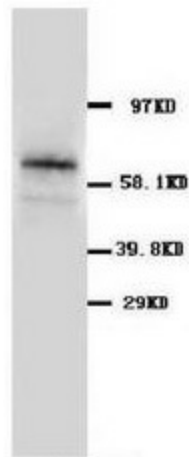
Glast, also known as EAAT1. EAAT1 (SLC1A3) is a member of a family of high-affinity sodium-dependent transporter molecules that regulate neurotransmitter concentrations at the excitatory glutamatergic synapses of the mammalian central nervous system. human GLAST1 gene contains 10 exons spanning at least 85 kb. EAAT1 gene is mapped to chromosome 5p13. GLAST is required for normal signal transmission between photoreceptors and bipolar cells and that both GLAST and GLT-1 play a neuroprotective role during ischemia in the retina. Mutation in the glutamate transporter EAAT1 causes episodic ataxia, hemiplegia, and seizures.

Synonyms:

GLAST, GLAST1, GLAST-1

Protein Families:

Transmembrane

Product images:

Western blot analysis of rat pancreas tissue lysis using GLAST antibody