

Product datasheet for **AP23177PU-N**

PLK1 (161-440) Rabbit Polyclonal Antibody

Product data:

Product Type:	Primary Antibodies
Applications:	IHC, WB
Recommended Dilution:	Immunohistochemistry on Paraffin Sections: 10 µg/ml. Western Blot: 1/500 - 1/3000.
Reactivity:	Bovine, Human, Rat
Host:	Rabbit
Clonality:	Polyclonal
Immunogen:	Recombinant protein fragment containing a sequence corresponding to a region within amino acids 161 and 440 of Human PLK1
Specificity:	This antibody detects PLK1 at 161-440.
Formulation:	0.1 M Tris-glycine, pH 7, 10% Glycerol, 0.01% Thimerosal State: Aff - Purified State: Liquid Ig fraction
Concentration:	lot specific
Purification:	Immunoaffinity Chromatography
Conjugation:	Unconjugated
Storage:	Store (in aliquots) at -20 °C. Dilute only prior to immediate use. Avoid repeated freezing and thawing.
Stability:	Shelf life: one year from despatch.
Gene Name:	polo like kinase 1
Database Link:	Entrez Gene 25515 Rat Entrez Gene 5347 Human P53350
Background:	PLK, a Polo type protein kinase, has been shown to function in mitosis. The mRNA is absent or expressed at very low levels during the G1 phase, begins to reaccumulate during the S phase, and reaches maximal levels during the G2/M phase. PLK1 may participate in targeting MPF to the nucleus during prophase and in regulating mitotic spindle function. These functions, in addition to its expression in proliferating cells, suggest that PLK1 has a role in cancer progression.



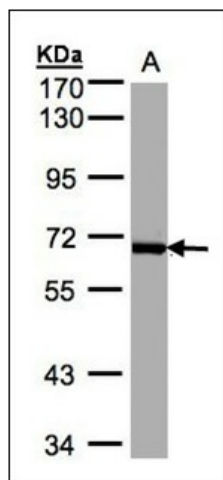
[View online »](#)

Synonyms: Polo-like kinase 1, PLK-1, STPK13

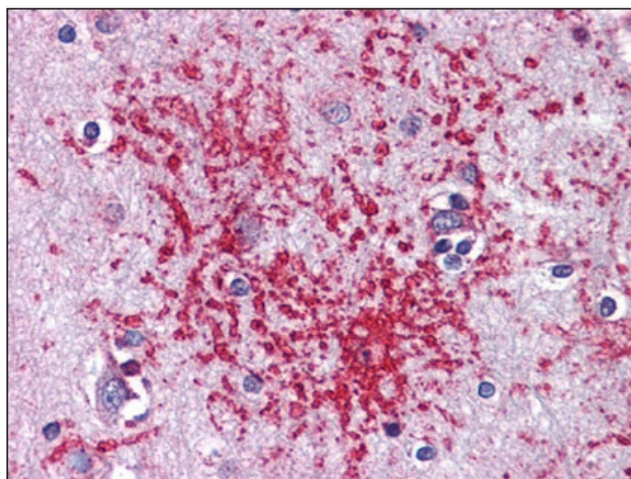
Protein Families: Druggable Genome, Protein Kinase

Protein Pathways: Cell cycle, Oocyte meiosis, Progesterone-mediated oocyte maturation

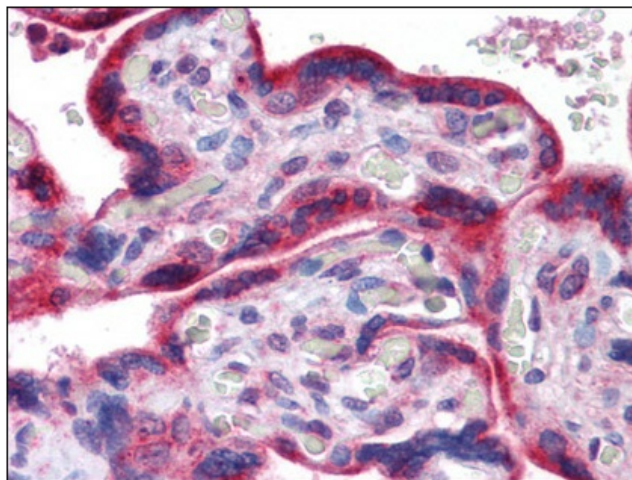
Product images:



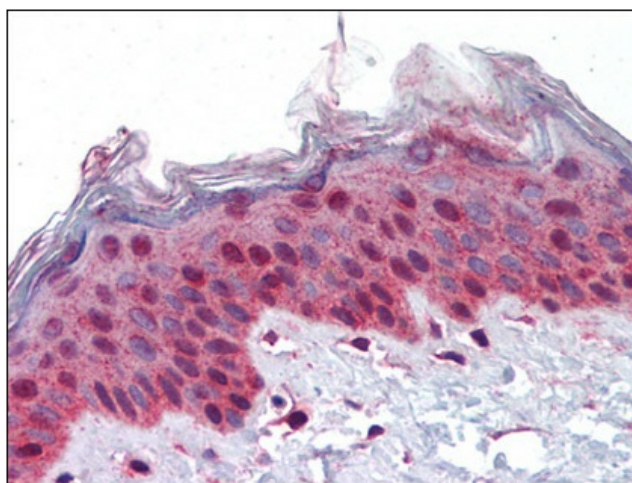
Sample (30 ug whole cell lysate). A:Raji. 7.5% SDS PAGE. PLK1 antibody diluted at 1:1000



Human Brain, cortex: Formalin-Fixed, Paraffin-Embedded (FFPE)



Human Placenta: Formalin-Fixed, Paraffin-Embedded (FFPE)



Human Skin: Formalin-Fixed, Paraffin-Embedded (FFPE)