

## Product datasheet for **AP23140PU-N**

### Two pore calcium channel protein 2 (TPCN2) (735-747) Goat Polyclonal Antibody

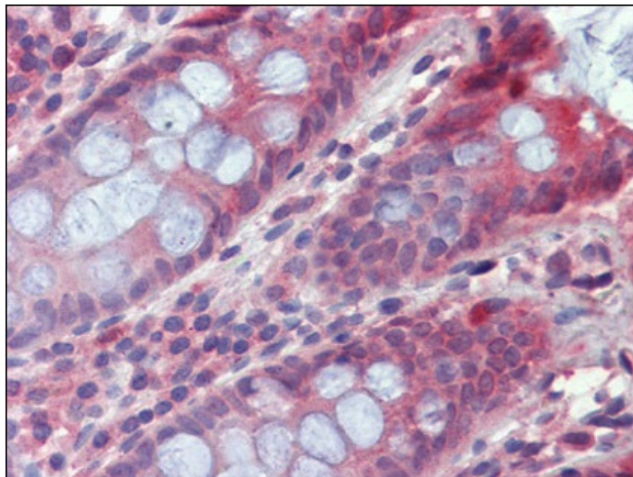
#### Product data:

Product Type:	Primary Antibodies
Applications:	IHC
Recommended Dilution:	<b>Immunohistochemistry on Paraffin Sections:</b> 3.75 µg/ml.
Reactivity:	Human
Host:	Goat
Clonality:	Polyclonal
Immunogen:	Synthetic peptide from the C-terminus of human TPCN2 (NP_620714.2)
Specificity:	This antibody detects TPCN2 (C-term).
Formulation:	Tris saline, pH 7.3 containing 0.02% sodium azide as preservative and 0.5% BSA as stabilizer State: Aff - Purified State: Liquid purified Ig fraction
Concentration:	lot specific
Purification:	Immunoaffinity Chromatography
Conjugation:	Unconjugated
Storage:	Store the antibody undiluted at 2-8°C for one month or (in aliquots) at -20°C for longer. Avoid repeated freezing and thawing.
Stability:	Shelf life: one year from despatch.
Gene Name:	two pore segment channel 2
Database Link:	<a href="#">Entrez Gene 219931 Human</a> <a href="#">Q8NHX9</a>
Background:	TPC2 / TPCN2 is a putative cation-selective ion channel with two repeats of a six-transmembrane-domain. The protein localizes to lysosomal membranes and enables nicotinic acid adenine dinucleotide phosphate (NAADP) -induced calcium ion release from lysosome-related stores. This ubiquitously expressed gene has elevated expression in liver and kidney. Two common nonsynonymous SNPs in this gene strongly associate with blond versus brown hair pigmentation.
Synonyms:	Two pore calcium channel protein 2, TPC2
Protein Families:	Druggable Genome, Ion Channels: Other

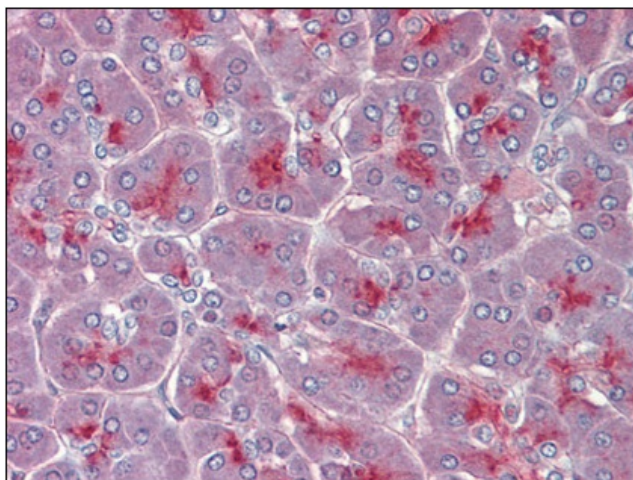


[View online »](#)

**Product images:**



Colon, Human: Formalin-Fixed, Paraffin-Embedded (FFPE)



Pancreas, Human: Formalin-Fixed, Paraffin-Embedded (FFPE)