

Product datasheet for **AP23050PU-N**

ILF2 (355-367) Goat Polyclonal Antibody

Product data:

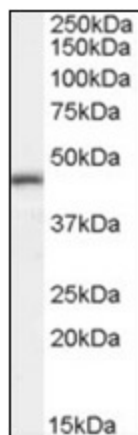
Product Type:	Primary Antibodies
Applications:	ELISA, IHC, WB
Recommended Dilution:	ELISA: 1/4000. Immunohistochemistry on Paraffin Sections: 2.5 µg/ml. Western Blot: 0.03 - 0.1 µg/ml.
Reactivity:	Human, Bovine, Canine, Equine, Monkey, Mouse, Porcine, Rabbit, Rat
Host:	Goat
Clonality:	Polyclonal
Immunogen:	Synthetic peptide from an internal region of human ILF2
Specificity:	This antibody detects ILF2 (Internal).
Formulation:	Tris saline buffer, pH 7.3 containing 0.5% BSA as stabilizer and 0.02% sodium azide as preservative State: Aff - Purified State: Liquid purified Ig fraction
Concentration:	lot specific
Purification:	Immunoaffinity chromatography
Conjugation:	Unconjugated
Storage:	Store the antibody undiluted at 2-8°C for one month or (in aliquots) at -20°C for longer. Avoid repeated freezing and thawing.
Stability:	Shelf life: one year from despatch.
Gene Name:	interleukin enhancer binding factor 2
Database Link:	Entrez Gene 67781 Mouse Entrez Gene 310612 Rat Entrez Gene 3608 Human Q12905
Background:	NF45 / ILF2 is a transcription factor required for T-cell expression of the interleukin 2 gene. It also binds RNA and is an essential component for encapsidation and protein priming of hepatitis B viral polymerase.
Synonyms:	ILF-2, NF45, NF-45, Interleukin enhancer-binding factor 2, Nuclear factor of activated T-cells 45 kDa



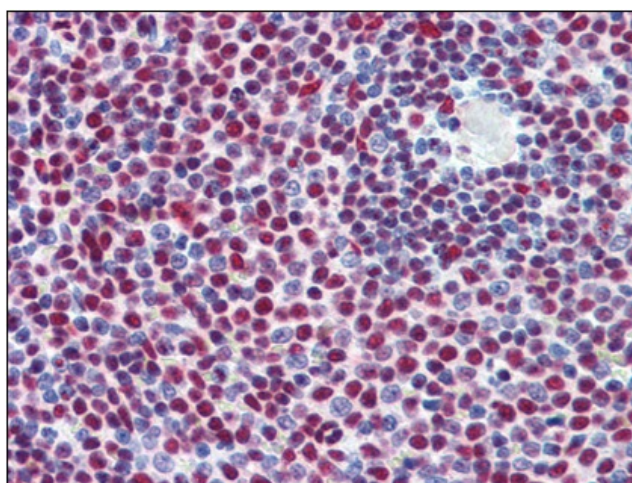
[View online »](#)

Protein Families: Druggable Genome, Transcription Factors

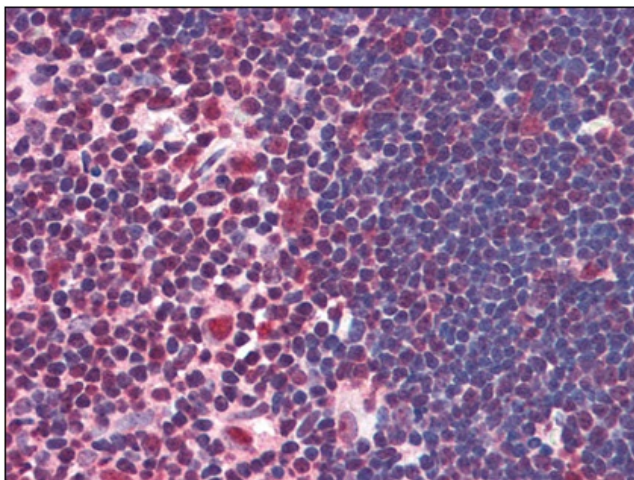
Product images:



Western Blot Image: Antibody (0.3 ug/ml) staining of Human Tonsil lysate (35 ug protein in RIPA buffer). Primary incubation was 1 hour. Detected by chemiluminescence.



Immunohistochemistry Image: Human Spleen: Formalin-Fixed, Paraffin-Embedded (FFPE)



Immunohistochemistry Image: Human Thymus:
Formalin-Fixed, Paraffin-Embedded (FFPE)