

## Product datasheet for **AP22967PU-N**

### **SPI1 (27-37) Goat Polyclonal Antibody**

#### **Product data:**

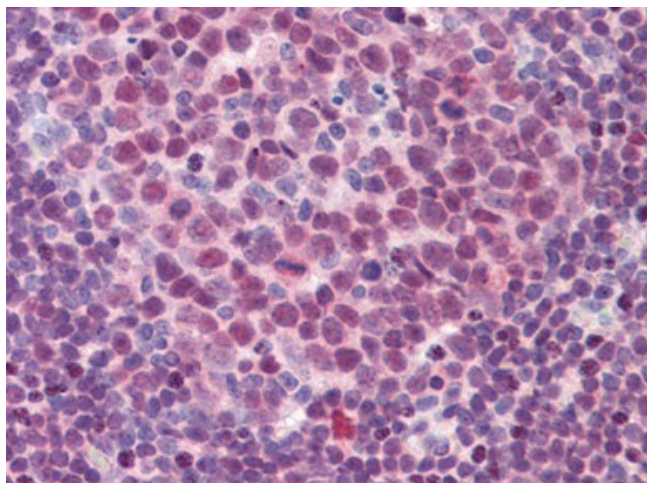
|                       |   |
|-----------------------|---|
| Product Type:         | Primary Antibodies  |
| Applications:         | IHC   |
| Recommended Dilution: | <b>Immunohistochemistry on Paraffin Sections:</b> 3.75 µg/ml.   |
| Reactivity:           | Human, Bovine, Canine, Equine, Porcine, Rabbit  |
| Host:                 | Goat  |
| Clonality:            | Polyclonal  |
| Immunogen:            | Synthetic peptide from an internal region of human SPI1 / PU.1 (NP_001074016.1; NP_003111.2)  |
| Specificity:          | This antibody reacts to the internal region of Spi-1 Proto-oncogene (SPI1).   |
| Formulation:          | Tris saline buffer, pH 7.3 containing 0.5% BSA and 0.02% sodium azide<br>State: Aff - Purified<br>State: Liquid purified Ig fraction  |
| Concentration:        | lot specific  |
| Purification:         | Immunoaffinity Chromatography   |
| Conjugation:          | Unconjugated  |
| Storage:              | Store the antibody undiluted at 2-8°C for one month or (in aliquots) at -20°C for longer.<br>Avoid repeated freezing and thawing.   |
| Stability:            | Shelf life: one year from despatch.   |
| Gene Name:            | Spi-1 proto-oncogene  |
| Database Link:        | <a href="#">Entrez Gene 6688 Human P17947</a>   |
| Background:           | Binds to the PU-box, a purine-rich DNA sequence (5'-GAGGAA-3') that can act as a lymphoid-specific enhancer. This protein is a transcriptional activator that may be specifically involved in the differentiation or activation of macrophages or B-cells. Also binds RNA and may modulate pre-mRNA splicing. |
| Synonyms:             | Transcription factor PU.1, SPI-1 proto-oncogene, SFPI1  |
| Protein Families:     | Transcription Factors   |



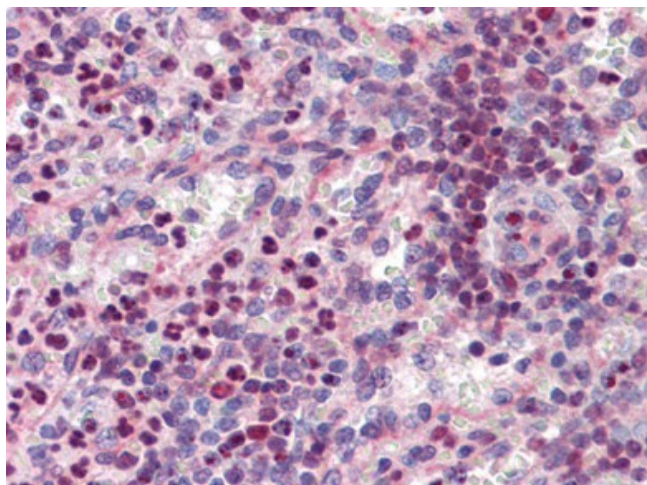
[View online »](#)

Protein Pathways: Acute myeloid leukemia, Pathways in cancer

**Product images:**



Colon, lymphoid aggregate, Human: Formalin-Fixed, Paraffin-Embedded (FFPE)



Spleen, Human: Formalin-Fixed, Paraffin-Embedded (FFPE)