

Product datasheet for **AP22594PU-N**

Glycophorin A (GYPA) (N-term) Rabbit Polyclonal Antibody

Product data:

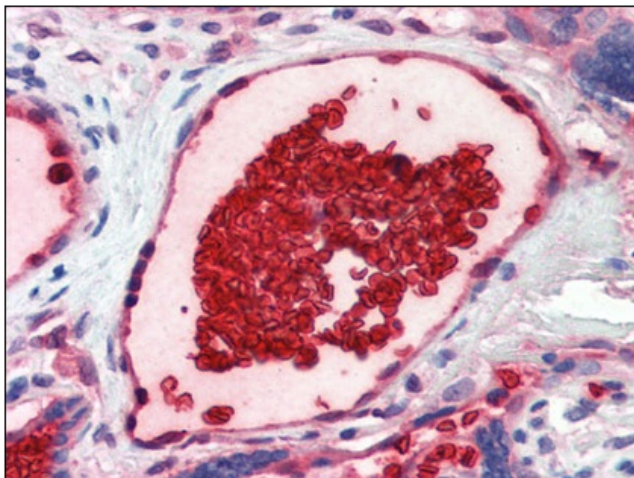
Product Type:	Primary Antibodies
Applications:	ELISA, FC, IHC, WB
Recommended Dilution:	ELISA. Flow Cytometry. Immunohistochemistry on Paraffin Sections: 5 µg/ml. Western Blot.
Reactivity:	Human
Host:	Rabbit
Isotype:	IgG
Clonality:	Polyclonal
Immunogen:	Human Glycophorin A transmembrane protein
Specificity:	This antibody targets the human Glycophorin A protein. This 131 amino acid, 36 KDa, transmembrane sialoglycoprotein spans the membrane of erythrocytes once. GpA presents its N terminus at the extracellular surface of it.
Formulation:	PBS containing 0.02% sodium azide as preservative State: Purified State: Liquid purified Ig fraction
Concentration:	lot specific
Purification:	Protein G Chromatography
Conjugation:	Unconjugated
Storage:	Store the antibody undiluted at 2-8°C for one month or (in aliquots) at -20°C for longer. Avoid repeated freezing and thawing.
Stability:	Shelf life: one year from despatch.
Gene Name:	glycophorin A (MNS blood group)
Database Link:	Entrez Gene 2993 Human P02724
Synonyms:	Glycophorin-A, GPA, PAS-2, Sialoglycoprotein alpha, MN sialoglycoprotein
Protein Families:	ES Cell Differentiation/IPS, Transmembrane



[View online »](#)

Protein Pathways: Hematopoietic cell lineage

Product images:



Human Placenta, Vessel with Erythrocytes (formalin-fixed, paraffin-embedded) stained with GYPA antibody at 5 ug/ml followed by biotinylated goat anti-rabbit IgG secondary antibody, alkaline phosphatase-streptavidin and chromogen.