

Product datasheet for **AP22501PU-N**

ROBO1 (994-1006) Goat Polyclonal Antibody

Product data:

Product Type:	Primary Antibodies
Applications:	ELISA, IHC, WB
Recommended Dilution:	ELISA: 1/8000. Immunohistochemistry on Paraffin Sections: 2 µg/ml. Western Blot: 1 - 3 µg/ml.
Reactivity:	Canine, Equine, Hamster, Human, Monkey, Mouse, Porcine, Rat, Bovine, Bat, Chicken, Xenopus
Host:	Goat
Clonality:	Polyclonal
Immunogen:	Synthetic peptide from an internal region of human ROBO1
Specificity:	This antibody detects ROBO1 at aa 994-1006. It is expected to recognise all reported isoforms (NP_002932.1; NP_598334.1; NP_001139316.1; NP_001139317.1).
Formulation:	Tris saline buffer, pH 7.3, 0.5% BSA, 0.02% sodium azide State: Aff - Purified State: Liquid Ig fraction
Concentration:	lot specific
Purification:	Immunoaffinity chromatography
Conjugation:	Unconjugated
Storage:	Store at 2 - 8 °C for up to three months or (in aliquots) at -20 °C for longer. Avoid repeated freezing and thawing.
Stability:	Shelf life: one year from despatch.
Gene Name:	roundabout guidance receptor 1
Database Link:	<u>Entrez Gene 19876 Mouse</u> <u>Entrez Gene 58946 Rat</u> <u>Entrez Gene 6091 Human Q9Y6N7</u>



[View online »](#)

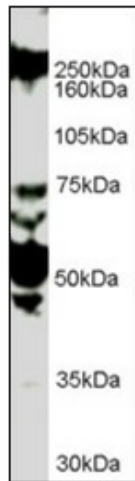
Background: Robo proteins are highly conserved transmembrane receptors that are expressed by growing axon tips. They play multiple parts in guiding axons to their correct locations in the developing brain and are particularly important for enabling axons to cross the midline. In all mammalian species studied so far, Robo is the receptor for Slit, a protein secreted by the midline of the nervous system. When bound to each other, Slit and Robo act as a chemorepellent, inducing growth of axon tips away from the midline.

Synonyms: ROBO-1, Roundabout homolog 1, DUTT1

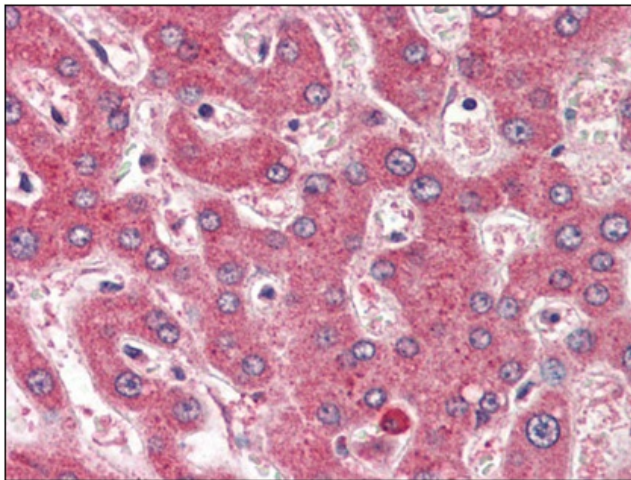
Protein Families: Druggable Genome

Protein Pathways: Axon guidance

Product images:



Antibody (1 ug/ml) staining of HUVEC lysate (35 ug protein in RIPA buffer). Primary incubation was 1 hour. Detected by chemiluminescence.



Human Liver (formalin-fixed, paraffin-embedded) stained with ROBO1 antibody at 2 ug/ml followed by biotinylated anti-goat IgG secondary antibody, alkaline phosphatase-streptavidin and chromogen.