

Product datasheet for **AP21265PU-N**

CRISP2 (81-93) Goat Polyclonal Antibody

Product data:

Product Type:	Primary Antibodies
Applications:	ELISA, IHC, WB
Recommended Dilution:	Peptide ELISA: Detection Limit: 1/8000. Western blot: In transfected HEK293 transiently expressing Human CRISP2 (MYC and DYKDDDDK tagged), a band of approx. 35kDa was observed. No bands were observed in mock-transfected HEK293 and the same band was observed using anti-myc tag antibody. Recommended concentration: 0.5-1µg/ml. Primary incubations were for 1 hour. Preliminary experiments gave an approx 55kDa band in Human Testis lysates after 1µg/ml antibody staining. Please note that currently we cannot find an explanation in the literature for the band we observe given the calculated size of 27.3kDa according to NP_003287.1. The 55kDa band was successfully blocked by incubation with the immunizing peptide. Immunohistochemistry on Paraffin Sections: 3.75 µg/ml (Human Testis).
Reactivity:	Canine, Human, Porcine
Host:	Goat
Clonality:	Polyclonal
Immunogen:	Synthetic peptide corresponding to internal sequence amino acids 81-93 of Human CRISP2 (NP_003287.1).
Specificity:	Recognizes CRISP2.
Formulation:	Tris saline, pH 7.3 containing 0.02% Sodium Azide as preservative and 0.5% BSA as stabilizer. State: Aff - Purified State: Liquid purified IgG fraction.
Concentration:	lot specific
Purification:	Ammonium Sulphate Precipitation followed by Antigen Affinity Chromatography using the immunizing peptide.
Conjugation:	Unconjugated
Storage:	Store undiluted at 2-8°C for one month or (in aliquots) at -20°C for longer. Avoid repeated freezing and thawing.
Stability:	Shelf life: one year from despatch.
Gene Name:	cysteine rich secretory protein 2



[View online »](#)

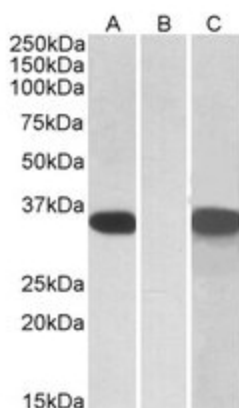
Database Link: [Entrez Gene 7180 Human P16562](#)

Background: Cysteine-rich secretory protein 2 (CRISP2) may regulate some ion channels' activity and thereby regulate calcium fluxes during sperm capacitation. CRISP2 is specific to testis and epididymis.

Synonyms: Cysteine-rich secretory protein 2, CRISP-2, Testis-specific protein TPX-1, Cancer/testis antigen 36, GAPDL5, TPX1, CT36

Protein Families: Secreted Protein

Product images:



HEK293 lysate (10ug protein in RIPA buffer) overexpressing Human CRISP2 with C-terminal MYC tag probed with CRISP2 Antibody (1 ug/ml) in Lane A and probed with anti-MYC Tag (1/1000) in lane C. Mock-transfected HEK293 probed with (1 mg/ml) in Lane B. Primary incubations were for 1 hour. Detected by chemiluminescence.