

Product datasheet for **AP20978PU-N**

FOXO1 Rabbit Polyclonal Antibody

Product data:

Product Type:	Primary Antibodies
Applications:	IHC, WB
Recommended Dilution:	Western blot: 1/500 - 1/1000. Immunohistochemistry on paraffin sections 1/50 - 1/200.
Reactivity:	Human, Mouse, Rat
Host:	Rabbit
Clonality:	Polyclonal
Specificity:	This antibody detects endogenous levels of FKHR/FOXO1A protein. (region surrounding Ser262)
Formulation:	Phosphate buffered saline (PBS), pH 7.2. State: Aff - Purified State: Liquid purified Ig fraction Preservative: 0.05% sodium azide
Concentration:	1.0 mg/ml
Purification:	Affinity chromatography (> 95% (by SDS-PAGE)
Conjugation:	Unconjugated
Storage:	Store undiluted at 2-8°C for one month or (in aliquots) at -20°C for longer. Avoid repeated freezing and thawing.
Stability:	Shelf life: one year from despatch.
Predicted Protein Size:	~ 70 to 82 kDa
Gene Name:	forkhead box O1
Database Link:	Entrez Gene 56458 Mouse Entrez Gene 84482 Rat Entrez Gene 2308 Human Q12778



[View online »](#)

Background:

FKHR (for forkhead in rhabdomyosarcoma) and FKHL1 are members of the forkhead family of transcription factors. Transcriptional activation of FKHR proteins is regulated by the serine/threonine kinase Akt1, which phosphorylates FKHL1 and results in FKHL1 associating with 14-3-3 proteins and being retained in the cytoplasm. Induction of apoptosis or withdrawal of growth factors stimulates dephosphorylation and nuclear translocation of FKHR proteins, leading to FKHR-induced gene-specific transcriptional activation. FKHR, also designated forkhead box protein O1A (FOXO1), is an ubiquitously expressed protein that shuttles between the cytoplasm and nucleus. Genetic mutations in FKHR genes, including the t(2;13) and t(1;3) translocations, are commonly found in alveolar rhabdomyosarcomas.

Synonyms:

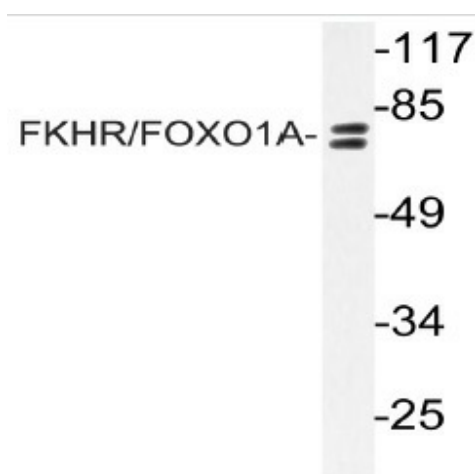
Forkhead Box Protein O1, FOXO1, FKHR

Protein Families:

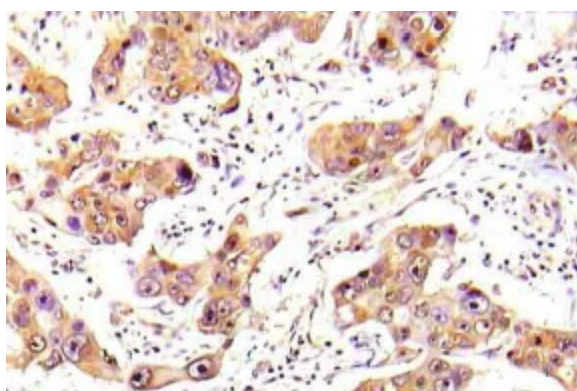
Druggable Genome, Transcription Factors

Protein Pathways:

Insulin signaling pathway, Pathways in cancer, Prostate cancer

Product images:

Western blot (WB) analyzes of FKHR/FOXO1A antibody (Cat.-No.: AP20978PU-N) in extracts from NIH/3T3 cells.



Immunohistochemistry (IHC) analyzes of FKHR/FOXO1A antibody (Cat.-No.: AP20978PU-N) in paraffin-embedded human breast carcinoma tissue.