

Product datasheet for **AP20958PU-N**

NF-kB p65 (RELA) pSer536 Rabbit Polyclonal Antibody

Product data:

Product Type:	Primary Antibodies
Applications:	IHC
Recommended Dilution:	Immunohistochemistry on paraffin sections: 1:50 - 1:200.
Reactivity:	Human, Mouse, Rat
Host:	Rabbit
Clonality:	Polyclonal
Specificity:	This antibody detects endogenous levels of p-NFkB-p65 pSer536 protein.
Formulation:	Phosphate buffered saline (PBS) with 15 mM sodium azide, approx. pH 7.2 State: Aff - Purified State: Liquid Ig fraction
Concentration:	1.0 mg/ml
Purification:	Affinity-purified from rabbit antiserum by affinity-chromatography using epitope-specific immunogen, purity is > 95% (by SDS-PAGE)
Conjugation:	Unconjugated
Storage:	Store at 2 - 8 °C for up to one month or (in aliquots) at -20 °C for longer. Avoid repeated freezing and thawing.
Stability:	Shelf life: one year from despatch.
Gene Name:	RELA proto-oncogene, NF-kB subunit
Database Link:	<u>Entrez Gene 19697 Mouse</u> <u>Entrez Gene 309165 Rat</u> <u>Entrez Gene 5970 Human</u> <u>Q04206</u>



[View online »](#)

Background:

Proteins encoded by the v-Rel viral oncogene and its cellular homolog, c-Rel, are members of a family of transcription factors that include the two subunits of the transcription factor NFκB (p50 and p65) and the Drosophila maternal morphogen, dorsal. Both proteins specifically bind to DNA sequences that are the same or slight variations of the 10 bp κB sequence in the immunoglobulin κ light chain enhancer. This same sequence is also present in a number of other cellular and viral enhancers. The DNA binding activity of NFκB is activated and NFκB is subsequently transported from the cytoplasm to the nucleus in cells exposed to mitogens or growth factors. cDNAs encoding precursors for two distinct proteins of the same size have been described, designated p105 and p100. The p105 precursor contains p50 at its N-terminus and a C-terminal region that when expressed as a separate molecule, designated pDL, binds to p50 and regulates its activity.

Synonyms:

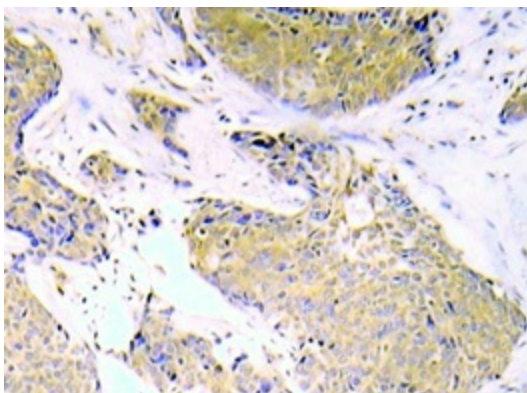
NF kappa B p65, NFκB p65, Transcription factor p65, Rel A, NFKB3

Protein Families:

Druggable Genome, Transcription Factors

Protein Pathways:

Acute myeloid leukemia, Adipocytokine signaling pathway, Apoptosis, B cell receptor signaling pathway, Chemokine signaling pathway, Chronic myeloid leukemia, Cytosolic DNA-sensing pathway, Epithelial cell signaling in Helicobacter pylori infection, MAPK signaling pathway, Neurotrophin signaling pathway, NOD-like receptor signaling pathway, Pancreatic cancer, Pathways in cancer, Prostate cancer, RIG-I-like receptor signaling pathway, Small cell lung cancer, T cell receptor signaling pathway, Toll-like receptor signaling pathway

Product images:


Immunohistochemistry analyzes of p-NFκB-p65 antibody (AP20958PU-N) in paraffin-embedded human lung adenocarcinoma tissue.