

Product datasheet for **AP20908PU-N**

STAT5A pSer780 Rabbit Polyclonal Antibody

Product data:

| | |
|-------------------------|---------------------------------------------------------------------------------------------------------------------------------------------|
| Product Type: | Primary Antibodies |
| Applications: | IHC, WB |
| Recommended Dilution: | Western blot: 1/500 - 1/1000. Immunohistochemistry on paraffin sections 1/50 - 1/200. |
| Reactivity: | Human, Mouse, Rat |
| Host: | Rabbit |
| Clonality: | Polyclonal |
| Specificity: | This antibody detects endogenous levels of p-STAT-5A protein only when phosphorylated at Ser780. |
| Formulation: | Phosphate buffered saline (PBS), pH 7.2. State: Aff - Purified State: Liquid purified Ig fraction Preservative: 0.05% sodium azide |
| Concentration: | 1.0 mg/ml |
| Purification: | Affinity chromatography (> 95% (by SDS-PAGE) |
| Conjugation: | Unconjugated |
| Storage: | Store undiluted at 2-8°C for one month or (in aliquots) at -20°C for longer. Avoid repeated freezing and thawing. |
| Stability: | Shelf life: one year from despatch. |
| Predicted Protein Size: | ~ 90 kDa |
| Gene Name: | signal transducer and activator of transcription 5A |
| Database Link: | Entrez Gene 20850 Mouse Entrez Gene 24918 Rat Entrez Gene 6776 Human P42229 |



[View online »](#)

Background:

Stat 5a protein is a transcription factor activated by hormone and cytokines. Two highly related, but distinct Stat 5 genes (Stat 5a and Stat 5b) were identified in mouse. The amino acid sequences of Stat 5a and Stat 5b show 96% sequence similarity, and both proteins are co expressed in most tissues of both virgin and lactating mice. However, differential accumulation of Stat 5a and Stat 5b mRNA has been reported for both muscle and mammary tissue. Stat 5a is critically involved in a variety of physiological functions, including reproduction, lactation, immune function and somatic growth.

Synonyms:

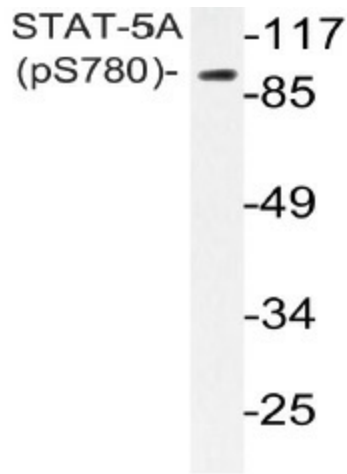
STAT-5, STAT-5A, Mammary gland factor, MGF

Protein Families:

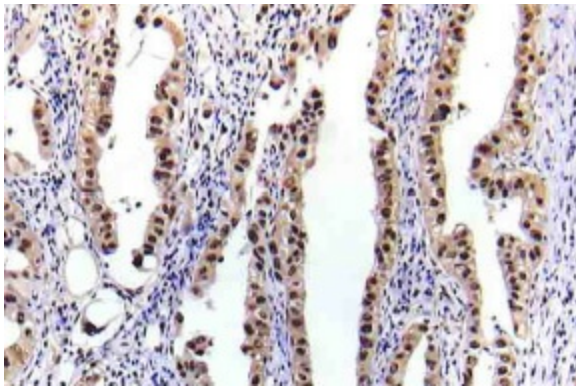
Druggable Genome, ES Cell Differentiation/IPS, Stem cell relevant signaling - DSL/Notch pathway, Stem cell relevant signaling - JAK/STAT signaling pathway, Transcription Factors

Protein Pathways:

Acute myeloid leukemia, Chronic myeloid leukemia, ErbB signaling pathway, Jak-STAT signaling pathway, Pathways in cancer

Product images:

Western blot (WB) analysis of p-STAT-5A antibody (Cat.-No.: AP20908PU-N) in extracts from HeLa cells



Immunohistochemistry (IHC) analyzes of p-STAT-5A antibody (Cat.-No.: AP20908PU-N) in paraffin-embedded human lung carcinoma tissue.