

## Product datasheet for **AP20652PU-N**

### ROCK1 Rabbit Polyclonal Antibody

#### Product data:

Product Type:	Primary Antibodies
Applications:	IHC, WB
Recommended Dilution:	<b>Western blot:</b> 1/500-1/1000. <b>Immunohistochemistry on paraffin sections:</b> 1:50 - 1:200.
Reactivity:	Human, Mouse, Rat
Host:	Rabbit
Clonality:	Polyclonal
Specificity:	This antibody detects endogenous levels of Rock-1 protein. (region surrounding asn311)
Formulation:	Phosphate buffered saline (PBS), pH 7.2 State: Aff - Purified State: Liquid purified Ig fraction Preservative: 0.05% sodium azide
Concentration:	1.0 mg/ml
Purification:	Affinity-chromatography using epitope-specific immunogen; purity is > 95% (by SDS-PAGE)
Conjugation:	Unconjugated
Storage:	Store undiluted at 2-8°C for one month or (in aliquots) at -20°C for longer. Avoid repeated freezing and thawing.
Stability:	Shelf life: one year from despatch.
Predicted Protein Size:	~ 158 kDa
Gene Name:	Rho associated coiled-coil containing protein kinase 1
Database Link:	<u><a href="#">Entrez Gene 19877 Mouse</a></u> <u><a href="#">Entrez Gene 81762 Rat</a></u> <u><a href="#">Entrez Gene 6093 Human</a></u> <u><a href="#">Q13464</a></u>



[View online »](#)

**Background:**

Rho, the Ras-related small GTPase, is responsible for the regulation of Actinbased cytoskeletal structures including stress fibers, focal adhesions and the contractile RING apparatus. Rho proteins function as molecular switches that are able to turn cytokinesis on and off. Although little is known about signaling downstream of Rho, a host of putative Rho effector proteins have been described, including rhophilin, Rhotekin, citron and the serine/threonine kinase, protein kinase N. Two additional Rho-activated serine/threonine kinases have been described, designated Rock-1 and Rock-2 (also referred to as Roka) for Rho-associated coil-containing protein kinase. Rock-1 and Rock-2 share a structural similarity with myotonic dystrophy kinase.

**Synonyms:**

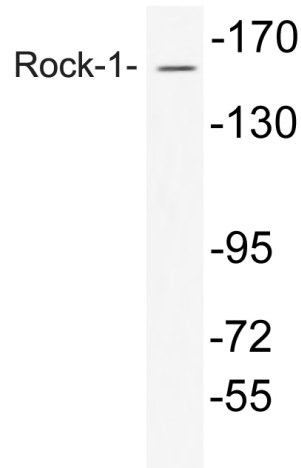
ROCK-1, p160ROCK, NY-REN-35

**Protein Families:**

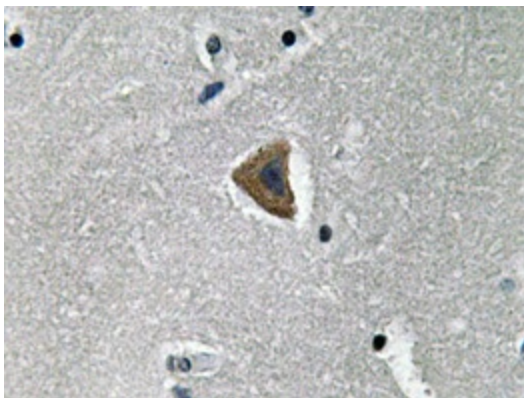
Druggable Genome, Protein Kinase

**Protein Pathways:**

Axon guidance, Chemokine signaling pathway, Focal adhesion, Leukocyte transendothelial migration, Pathogenic Escherichia coli infection, Regulation of actin cytoskeleton, TGF-beta signaling pathway, Vascular smooth muscle contraction, Wnt signaling pathway

**Product images:**


Western blot (WB) analysis of Rock-1 antibody (Cat.-No.: AP20652PU-N) in extracts from COS7 cells.



Immunohistochemistry analyzes of Rock-1 antibody (Cat.-No.: AP20652PU-N) in paraffin-embedded human brain tissue.