

Product datasheet for **AP20539PU-N**

14 3 3 gamma (YWHAG) Rabbit Polyclonal Antibody

Product data:

Product Type:	Primary Antibodies
Applications:	IF, IHC, WB
Recommended Dilution:	Western blot: 1/500-1/1000. Immunofluorescence: 1/50-1/200. Immunohistochemistry on Paraffin Sections: 1/50-1/200.
Reactivity:	Human, Mouse, Rat
Host:	Rabbit
Clonality:	Polyclonal
Immunogen:	Synthetic peptide, corresponding to amino acids 50-100 of Human 14-3-3 y.
Specificity:	This antibody detects endogenous levels of 14-3-3 gamma protein. (region surrounding Met81)
Formulation:	Phosphate Buffered Saline (PBS), pH~7.2 State: Aff - Purified State: Liquid purified Ig fraction (> 95% pure by SDS-PAGE) Preservative: 15 mM Sodium Azide
Concentration:	1.0 mg/ml
Purification:	Affinity Chromatography using epitope-specific immunogen
Conjugation:	Unconjugated
Storage:	Store undiluted at 2-8°C for one month or (in aliquots) at -20°C for longer. Avoid repeated freezing and thawing.
Stability:	Shelf life: one year from despatch.
Predicted Protein Size:	~28 kDa
Gene Name:	tyrosine 3-monooxygenase/tryptophan 5-monooxygenase activation protein gamma
Database Link:	Entrez Gene 22628 Mouse Entrez Gene 56010 Rat Entrez Gene 7532 Human P61981



[View online »](#)

Background:

14-3-3 proteins regulate many cellular processes relevant to cancer biology, notably apoptosis, mitogenic signaling and cell-cycle checkpoints. Seven isoforms comprise this family of signaling intermediates, denoted 14-3-3 beta, gamma, epsilon, zeta, eta, theta and sigma. 14-3-3 proteins form dimers that present two binding sites for ligand proteins, thereby bringing together two proteins that may not otherwise associate. These ligands largely share a 14-3-3 consensus binding motif and exhibit serine/threonine phosphorylation. 14-3-3 proteins function in broad regulation of these ligand proteins, by cytoplasmic sequestration, occupation of interaction domains and import/export sequences, prevention of degradation, activation/repression of enzymatic activity and facilitation of protein modification, and thus loss of expression contributes to a vast array of pathogenic cellular activities.

Synonyms:

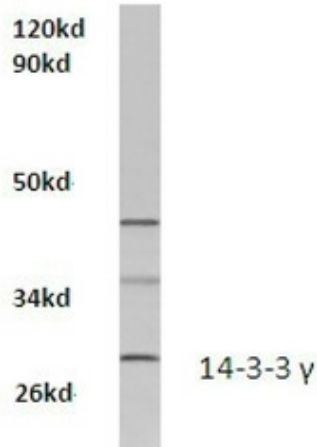
YWHAG, KCIP-1

Protein Families:

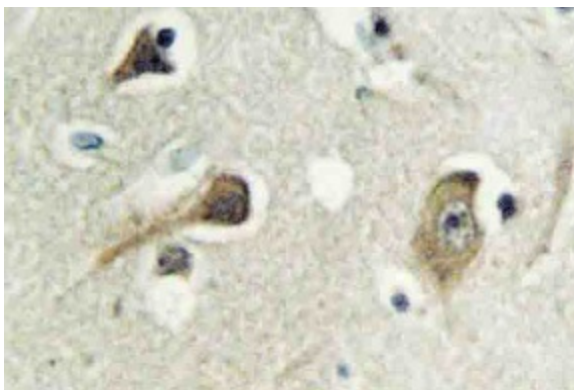
Druggable Genome

Protein Pathways:

Cell cycle, Neurotrophin signaling pathway, Oocyte meiosis

Product images:

Western blot analysis of 14-3-3 gamma Antibody in extracts from HeLa cells at 1/500 dilution.



Immunohistochemistry (IHC) analyzes of 14-3-3 gamma antibody in paraffin-embedded human brain tissue.